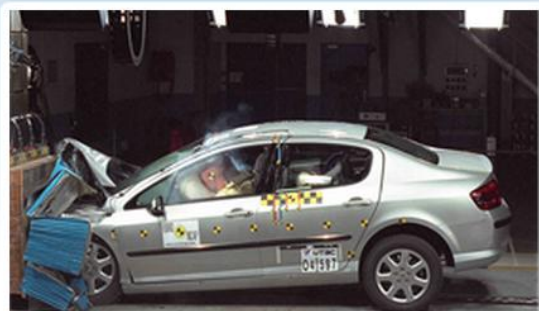


TEST RESULTS

Peugeot 407



RATING	SCORE	Front: 15 Side: 14	Seatbelt reminder: 2 Pole: 2
ADULT OCCUPANT ★ ★ ★ ★ ★	34		
CHILD OCCUPANT ★ ★ ★ ★ ☆	39		
PEDESTRIAN ★ ★ ☆ ☆	15		

Adult occupant protection



Frontal impact driver



Frontal impact passenger



Side impact driver

■	GOOD
■	ADEQUATE
■	MARGINAL
■	WEAK
■	POOR

Child restraints

18 month old Child Britax Roemer Duo Plus, forward facing

3 year old Child Britax Roemer Duo Plus, forward facing

Pedestrian protection

No image car front available

Safety equipment

Front seatbelt pretensioners	<input checked="" type="checkbox"/>
Front seatbelt load limiters	<input checked="" type="checkbox"/>
Driver frontal airbag	<input checked="" type="checkbox"/>
Front passenger frontal airbag	<input checked="" type="checkbox"/>
Side body airbags	<input checked="" type="checkbox"/>
Side head airbags	<input checked="" type="checkbox"/>
Driver knee airbag	<input checked="" type="checkbox"/>

Car details

Hand of drive	LHD
Tested model	Peugeot 407 2.0 Comfort
Body type	4 door Translation not found
Year of publication	2004
Kerb weight	1435
VIN from which rating applies	Applies to all applies 407s

Comments

The 407 has a very strong and stable passenger safety cage. It scored close to the maximum number of available points in the frontal impact. The restraint systems and airbags, including a knee airbag for the driver, protected occupants and kept the driver's chest and head away from the steering wheel. Side impact protection includes side airbags and a curtain airbag. Child protection was good but pedestrian protection proved to be average, with no protection given where an adult's head would most likely strike.

Front impact

Dual stage non-tethered airbags for the driver and front passenger and belt pre-tensioners plus load limiters worked well. The driver's knee airbag was also very effective. The body showed minimal deformation at its sill and screen pillar and only minor footwell intrusion. Rear seats each had three-point belts with load limiters.

Side impact

The seat-mounted thorax and pelvis airbag and head curtain airbag worked efficiently; the curtain also protected those sat in the rear. However, the 407 was penalised in this section of the tests because forces transferred in an unrealistic manner to the test dummy's spine, so reducing the level of forces recorded by instrumentation in its chest.

Child occupant

The recommended restraints were forward-facing Britax Romer Duo Plus, which were fitted to the car using ISOFix mountings. Both children were protected in the frontal and side impact although the older child's chest load in the frontal impact was just a little on the high side. The 407 has a manual on/off switch for the passenger frontal airbag. Instructions for using it were given in a non-permanent pictogram and a written label on the passenger's end of the fascia. Permanent labels fitted to both sides of the passenger's sun visor warned against placing a child in a rear-facing seat opposite an airbag.

Pedestrian

The bonnet's leading edge and, though less, the bumper gave protection. Limited protection is available where a child's head might strike, but none was evident for an adult.