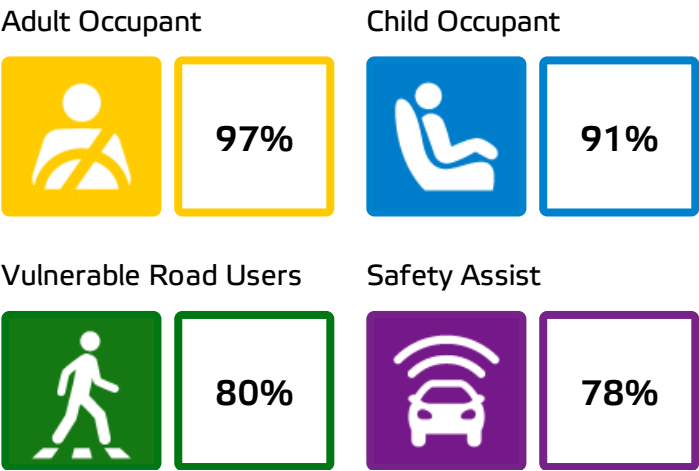




Subaru Forester  
Standard Safety Equipment

2019 ★★★★★



SPECIFICATION

Tested Model	Subaru Forester 2.0i-L EyeSight
Body Type	- 5 door SUV
Year Of Publication	2019
Kerb Weight	1678kg
VIN From Which Rating Applies	- all Foresters
Class	Small Off-Road

SAFETY EQUIPMENT

	Driver	Passenger	Rear
FRONTAL CRASH PROTECTION			
Frontal airbag	●	●	✖
Belt pretensioner	●	●	●
Belt loadlimiter	●	●	●
Knee airbag	●	✖	✖
SIDE CRASH PROTECTION			
Side head airbag	●	●	●
Side chest airbag	●	●	✖
Side pelvis airbag	●	●	✖

## SAFETY EQUIPMENT (NEXT)

	Driver	Passenger	Rear
CHILD PROTECTION			
Isofix	—	✗	●
Integrated CRS	—	✗	✗
Airbag cut-off switch	—	●	—
SAFETY ASSIST			
Seat Belt Reminder	●	●	●

OTHER SYSTEMS	
Active Bonnet (Hood)	✗
AEB Pedestrian	●
AEB City	●
AEB Cyclist	●
AEB Inter-Urban	●
Speed Assistance System	●
Lane Assist System	●

**Note:** Other equipment may be available on the vehicle but was not considered in the test year.

- Fitted to the vehicle as standard    ○ Fitted to the vehicle as part of the safety pack  
 ○ Not fitted to the test vehicle but available as option or as part of the safety pack    ✗ Not available    — Not applicable



ADULT OCCUPANT

Total 37.1 Pts / 97%



GOOD



ADEQUATE



MARGINAL



WEAK



POOR

Frontal Offset Deformable Barrier

7.9 / 8 Pts



Passenger



Driver

Frontal Full Width

7.6 / 8 Pts



Rear Passenger



Driver

Whiplash Rear Impact

1.7 / 2 Pts



Front seat



Rear seat

Lateral Impact

16.0 / 16 Pts



Car



Pole



ADULT OCCUPANT

Total 37.1 Pts / 97%



GOOD



ADEQUATE



MARGINAL



WEAK



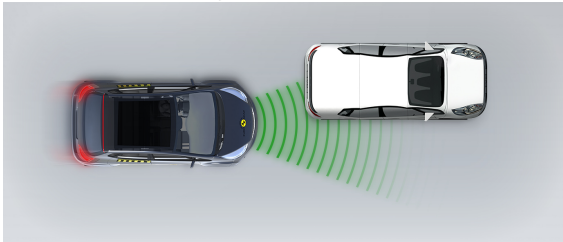
POOR

AEB City

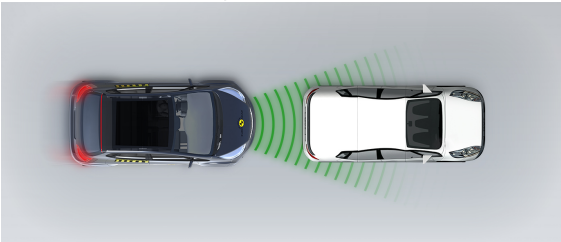


4.0 / 4 Pts

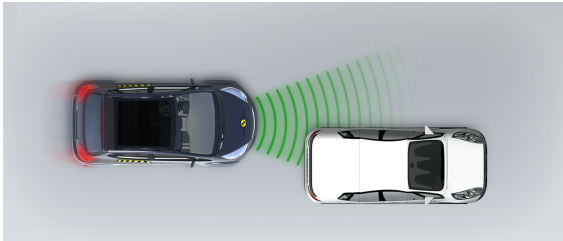
Approaching a stationary car: Left Offset



Approaching a stationary car: No Offset



Approaching a stationary car: Right Offset





## ADULT OCCUPANT

Total 37.1 Pts / 97%

## Comments

The passenger compartment of the Forester remained stable in the frontal offset test. Dummy readings indicated good protection of the knees and femurs of the driver and passenger. Subaru showed that a similar level of protection would be provided to occupants of different sizes and to those sitting in different positions. In the full-width rigid barrier test, protection of all critical body areas was good or adequate for both occupants, with the exception of the chest of the rear passenger, for which readings of compression indicated marginal protection. In both the side barrier and the more severe side pole tests, protection of all critical body areas was good and the car scored full points in both of these tests. Tests on the front seats and head restraints demonstrated good protection against whiplash injuries in the event of a rear-end collision. A geometric assessment of the rear seats also indicated good whiplash protection. The standard-fit autonomous emergency braking (AEB) system performed well in tests of its functionality at the low speeds at which many whiplash injuries occur, with collisions avoided in all test scenarios.

## CHILD OCCUPANT

Total 45 Pts / 91%

GOOD ADEQUATE MARGINAL WEAK POOR

Crash Test Performance based on 6 &amp; 10 year old children

24.0 / 24 Pts

Frontal Impact

16 Pts



Lateral Impact

8 Pts

Restraint for 6 year old child: *Britax Römer KIDFIX XP*Restraint for 10 year old child: *Booster Cushion*

## Safety Features

9.0 / 13 Pts

	Front Passenger	2nd row outboard	2nd row center
Isofix	✗	●	✗
i-Size	✗	●	✗
Integrated CRS	✗	✗	✗

● Fitted to test car as standard    ○ Not on test car but available as option    ✗ Not available

## CRS Installation Check

12.0 / 12 Pts

● Install without problem    
 ● Install with care    
 ● Safety critical problem    
 ✗ Installation not allowed

## ■ i-Size CRS

Maxi Cosi 2way Pearl & 2wayFix (rearward) (iSize)



Maxi Cosi 2way Pearl & 2wayFix (forward) (iSize)



BeSafe iZi Kid X2 i-Size (iSize)



BeSafe iZi Flex FIT i-Size (iSize)



## ■ ISOFIX CRS

Maxi Cosi Cabriofix & FamilyFix (ISOFIX)



BeSafe iZi Kid X4 ISOfix (ISOFIX)



Britax Römer Duo Plus (ISOFIX)



Britax Römer KidFix XP (ISOFIX)







CHILD OCCUPANT

Total 45 Pts / 91%

■ Universal Belted CRS

Maxi Cosi Cabriofix (Belt)



Maxi Cosi Cabriofix & EasyBase2 (Belt)



Britax Römer King II LS (Belt)



Britax Römer KidFix XP (Belt)





## CHILD OCCUPANT

Total 45 Pts / 91%

	Seat Position			
	Front	2nd row		
	PASSENGER	LEFT	CENTER	RIGHT
Maxi Cosi 2way Pearl & 2wayFix (rearward) (iSize)	—	●	—	●
Maxi Cosi 2way Pearl & 2wayFix (forward) (iSize)	—	●	—	●
BeSafe iZi Kid X2 i-Size (iSize)	—	●	—	●
BeSafe iZi Flex FIT i-Size (iSize)	—	●	—	●
Maxi Cosi Cabriofix & FamilyFix (ISOFIX)	—	●	—	●
BeSafe iZi Kid X4 ISOfix (ISOFIX)	—	●	—	●
Britax Römer Duo Plus (ISOFIX)	—	●	—	●
Britax Römer KidFix XP (ISOFIX)	—	●	—	●
Maxi Cosi Cabriofix (Belt)	●	●	●	●
Maxi Cosi Cabriofix & EasyBase2 (Belt)	●	●	✗	●
Britax Römer King II LS (Belt)	●	●	●	●
Britax Römer KidFix XP (Belt)	●	●	●	●

● Install without problem    ● Install with care    ● Safety critical problem    ✗ Installation not allowed  
 — Not available

## Comments

In both the frontal and side barrier tests, protection of all critical body areas was good for both dummies and the Forester scored maximum points in this part of the assessment. The front passenger airbag is automatically disabled when a rearward-facing child restraint is put in that seating position. Tests showed that the system worked robustly and the system was rewarded. All of the restraint types for which the Forester is designed could be properly installed and accommodated in the car.



## VULNERABLE ROAD USERS

Total 38.5 Pts / 80%

 GOOD

 ADEQUATE

 MARGINAL

 WEAK

 POOR

## Pedestrian

30.1 / 36 Pts



Head Impact 18.1 Pts

Pelvis Impact 6.0 Pts

Leg Impact 6.0 Pts

## Vulnerable Road Users

8.4 / 12 Pts

System Name

EyeSight

Type

Auto-Brake with Forward Collision Warning

Operational From

0 km/h

## Comments

The bonnet provided good or adequate protection to the head of a struck pedestrian over almost the entire surface. The bumper provided good protection to pedestrians' legs and protection of the pelvis was also good. The Forester's AEB system can detect vulnerable road users like pedestrians and cyclists, as well as other vehicles. In tests, the system's response to pedestrians was good, with collisions avoided or mitigated in most cases but its response to faster-moving road users like cyclists was marginal.



## VULNERABLE ROAD USERS

Total 38.5 Pts / 80%

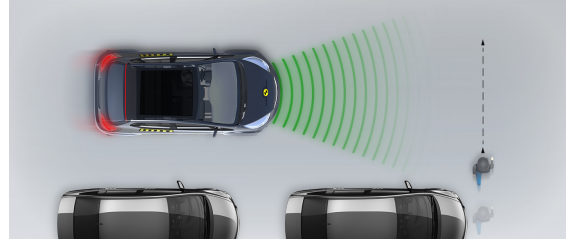
## AEB Pedestrian

## ■ Day time

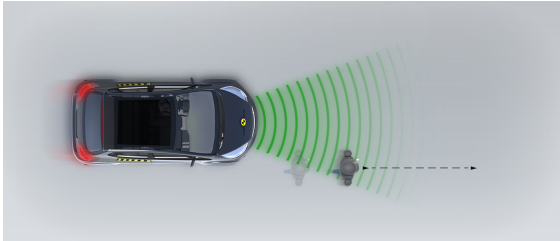
Adult crossing the road



Child running from behind parked vehicles



Adult along the roadside

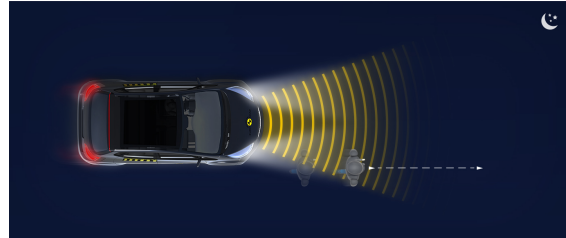


## ■ Night time

Adult crossing the road

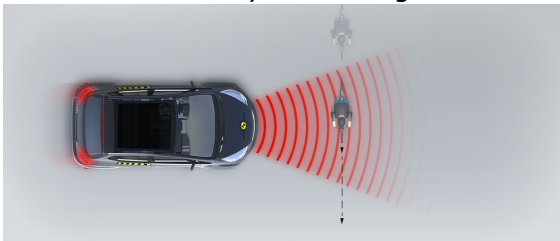


Adult along the roadside

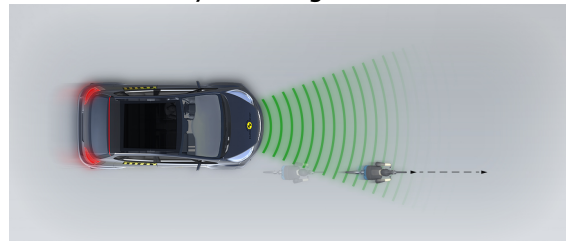


## AEB Cyclist

Cyclist crossing



Cyclist along the roadside





## SAFETY ASSIST

Total 10.2 Pts / 78%

 GOOD


 ADEQUATE

 MARGINAL

 WEAK


 POOR









## Speed Assistance

 1.3 / 3 Pts

System Name	EyeSight
Speed Limitation Function	Manually set (accurate to 5km/h)


## Seatbelt Reminder




 3.0 / 3 Pts

Applies To	All Seats		
Warning	Driver Seat	Front Passenger(s)	Rear Passenger(s)
Visual			
Audible			
Occupant Detection	—		

 Pass
  Fail
 — Not available

## Lane Support

 3.3 / 4 Pts

System Name	EyeSight
Type	ELK + LKA (including LDW)
Operational From	60 km/h
PERFORMANCE	
Emergency Lane Keeping	 GOOD
Lane Keep Assist	 GOOD
Human Machine Interface	 GOOD



SAFETY ASSIST

Total 10.2 Pts / 78%

AEB Inter-Urban

2.7 / 3 Pts

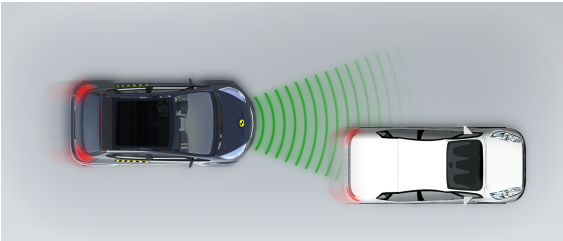
System Name	EyeSight
Type	Autonomous Emergency Braking and Forward Collision Warning
Operational From	0 km/h
Additional Information	Supplementary warning

Comments

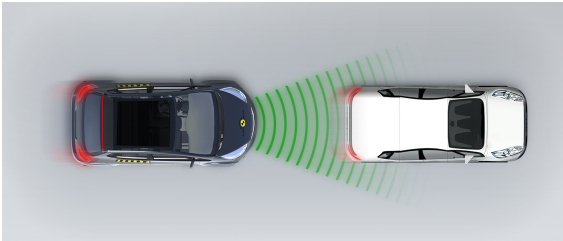
The Forester has a seatbelt reminder system for the front and rear seats. The AEB system performed well in tests of its response to other vehicles at highway speeds, with collisions avoided or mitigated in all test scenarios. A lane support system helps prevent inadvertent drifting out of lane and also intervenes in some more critical situations. The driver-set speed limiter helps the driver to avoid over-speeding.

Autobrake function only

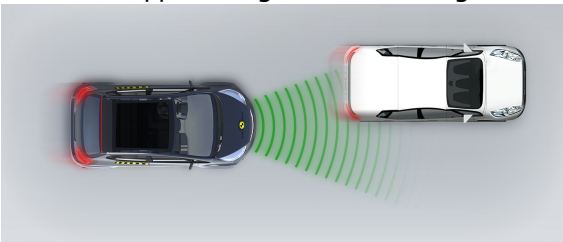
Approaching a slower moving car



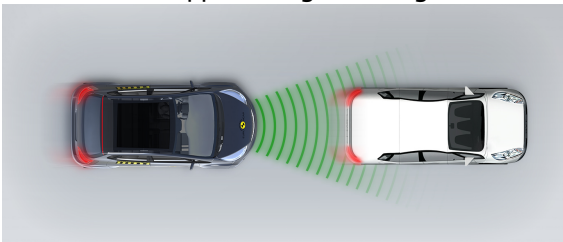
Approaching a slower moving car



Approaching a slower moving car



Approaching a braking car



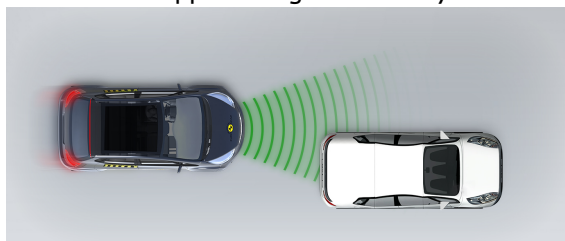


## SAFETY ASSIST

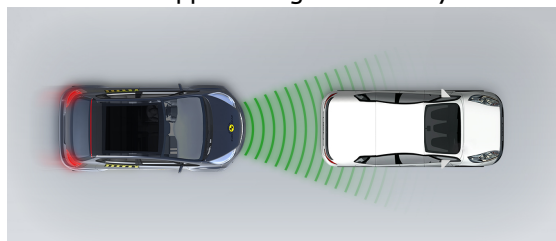
Total 10.2 Pts / 78%

### ■ Driver reacts to warning

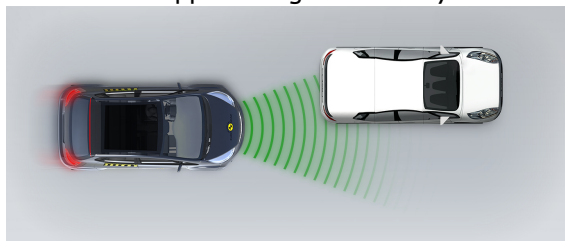
Approaching a stationary car



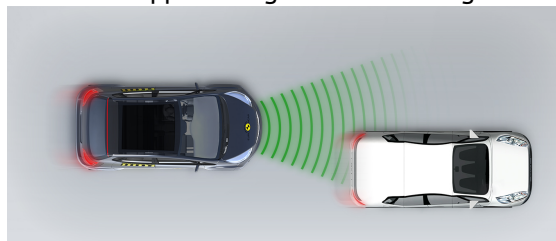
Approaching a stationary car



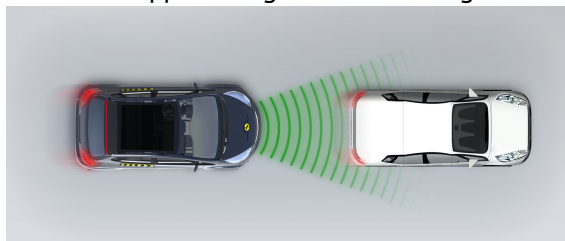
Approaching a stationary car



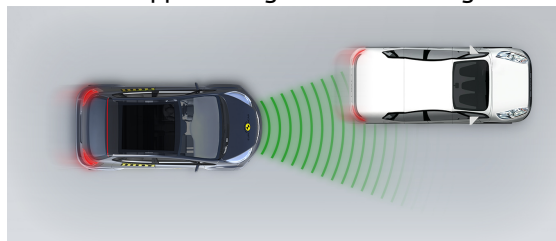
Approaching a slower moving car



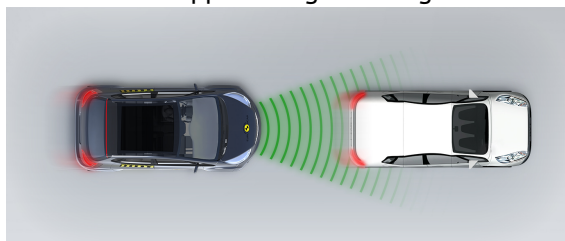
Approaching a slower moving car



Approaching a slower moving car



Approaching a braking car



## RATING VALIDITY

### Variants of Model Range

Body Type	Engine & Transmission	Model Name/Code	Drivetrain	Rating Applies	
				LHD	RHD
5 door SUV	2.0 petrol*	e-BOXER	4 x 4	✓	✓

\* Tested variant

### Annual Reviews and Facelifts

Date	Event	Outcome	
December 2019	Rating Published	2019 ★ ★ ★ ★ ★	✓
December 2020	Annual Review	2019 ★ ★ ★ ★ ★	✓
October 2021	Facelift Review (22 model year)	2019 ★ ★ ★ ★ ★	✓
December 2021	Annual Review	2019 ★ ★ ★ ★ ★	✓