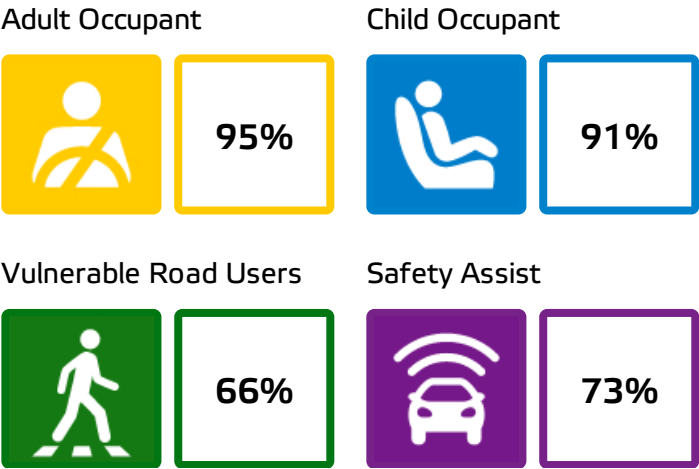




Mazda 6
Standard Safety Equipment

2018 ★★★★★



SPECIFICATION

Tested Model	Mazda6 2.2 diesel 'Core', LHD
Body Type	- 5 door estate
Year Of Publication	2018
Kerb Weight	1577kg
VIN From Which Rating Applies	- all Mazda 6's
Class	Large Family Car

SAFETY EQUIPMENT

	Driver	Passenger	Rear
FRONTAL CRASH PROTECTION			
Frontal airbag	●	●	✗
Belt pretensioner	●	●	●
Belt loadlimiter	●	●	●
Knee airbag	✗	✗	✗
SIDE CRASH PROTECTION			
Side head airbag	●	●	●
Side chest airbag	●	●	✗
Side pelvis airbag	●	●	✗
	Driver	Passenger	Rear
CHILD PROTECTION			
Isofix/i-Size	—	✗	●
Integrated CRS	—	✗	✗
Airbag cut-off switch	—	●	—
SAFETY ASSIST			
Seat Belt Reminder	●	●	●

SAFETY EQUIPMENT (NEXT)

	Driver	Passenger	Rear
CHILD PROTECTION			
Isofix/i-Size	—	✗	●
Integrated CRS	—	✗	✗
Airbag cut-off switch	—	●	—
SAFETY ASSIST			
Seat Belt Reminder	●	●	●

OTHER SYSTEMS	
Active Bonnet (Hood)	●
AEB Pedestrian	●
AEB City	●
AEB Cyclist	✗
AEB Inter-Urban	●
Speed Assistance System	●
Lane Assist System	●

Note: Other equipment may be available on the vehicle but was not considered in the test year.

- Fitted to the vehicle as standard ○ Fitted to the vehicle as part of the safety pack
 ○ Not fitted to the test vehicle but available as option or as part of the safety pack ✗ Not available — Not applicable



ADULT OCCUPANT

Total 36.1 Pts / 95%

GOOD ADEQUATE MARGINAL WEAK POOR

Frontal Offset Deformable Barrier 7.5 / 8 Pts



Passenger



Driver

Frontal Full Width 6.8 / 8 Pts



Rear Passenger



Driver

Whiplash Rear Impact 1.8 / 2 Pts



Front seat



Rear seat

Lateral Impact 16.0 / 16 Pts



Car



Pole



ADULT OCCUPANT

Total 36.1 Pts / 95%



GOOD



ADEQUATE



MARGINAL



WEAK



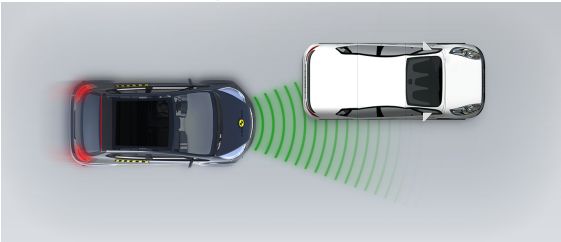
POOR

AEB City

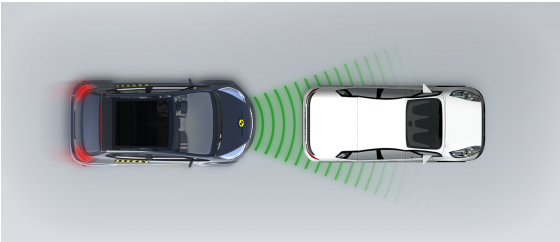


4.0 / 4 Pts

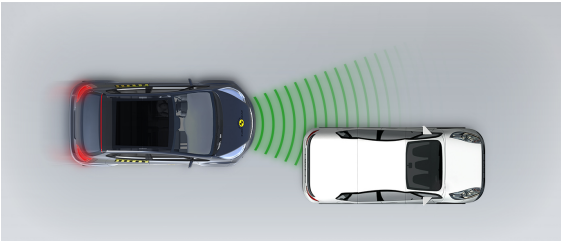
Approaching a stationary car: Left Offset



Approaching a stationary car: No Offset



Approaching a stationary car: Right Offset





ADULT OCCUPANT

Total 36.1 Pts / 95%

Comments

The passenger compartment of the Mazda 6 remained stable in the frontal offset test. Dummy readings showed good protection of all critical body areas for the passenger and good protection for the knees and femurs of both the driver and passenger. Mazda showed that a similar level of protection would be provided to occupants of different sizes and to those sitting in different positions. In the full-width rigid barrier test, protection of the driver dummy was good for all critical body areas. Protection of the rear passenger was good or adequate but the pelvis slipped beneath the lap section of the seatbelt, behaviour that was penalised, and the rating for this body area was rated as poor. In both the side barrier and the more severe side pole impacts, protection of all critical body areas was good and the Mazda 6 scored maximum points in these tests. Tests on the front seats and head restraints demonstrated good protection against whiplash injury in the event of a rear-end collision. A geometric assessment of the rear seats also indicated good whiplash protection. The standard-fit autonomous emergency braking (AEB) system scored maximum points in tests of its functionality at the low speeds, typical of city driving, at which many whiplash injuries are caused.



CHILD OCCUPANT

Total 45.0 Pts / 91%

 GOOD

 ADEQUATE

 MARGINAL

 WEAK

 POOR

Crash Test Performance based on 6 & 10 year old children

24.0 / 24 Pts

Frontal Impact

16 Pts



Lateral Impact




8 Pts

Restraint for 6 year old child: *Britax Römer KidFix XP*Restraint for 10 year old child: *Booster Cushion*

Safety Features

9.0 / 13 Pts

	Front Passenger	2nd row outboard	3rd row outboard
Isofix	✗	●	✗
i-Size	✗	●	✗
Integrated CRS	✗	✗	✗

 Fitted to test car as standard
  Not on test car but available as option
  Not available

CRS Installation Check

12.0 / 12 Pts

● Install without problem
 ● Install with care
 ● Safety critical problem
 ✗ Installation not allowed

■ i-Size CRS

 Maxi Cosi 2way Pearl & 2wayFix
 (rearward) (iSize)

 Maxi Cosi 2way Pearl & 2wayFix
 (forward) (iSize)


BeSafe iZi Kid X2 i-Size (iSize)



■ ISOFIX CRS

Maxi Cosi Cabriofix & FamilyFix (ISOFIX)



BeSafe iZi Kid X4 ISOfix (ISOFIX)



Britax Römer Duo Plus (ISOFIX)



Britax Römer KidFix XP (ISOFIX)





CHILD OCCUPANT

Total 45.0 Pts / 91%

■ Universal Belted CRS

Maxi Cosi Cabriofix (Belt)



Maxi Cosi Cabriofix & EasyBase2 (Belt)



Britax Römer King II LS (Belt)



Britax Römer KidFix XP (Belt)



Comments

In both the frontal offset and the side barrier impacts, protection was good for all critical body areas for the 6 and 10 year children. The front passenger airbag can be deactivated to allow a rearward-facing child restraint to be used in that seating position. Clear information is provided to the driver regarding the status of the airbag and the system was rewarded. All of the restraint types for which the Mazda 6 is designed could be properly installed and accommodated in the car.



CHILD OCCUPANT

Total 45.0 Pts / 91%

	Seat Position			
	Front	2nd row		
	PASSENGER	LEFT	CENTER	RIGHT
Maxi Cosi 2way Pearl & 2wayFix (rearward) (iSize)	—	●	—	●
Maxi Cosi 2way Pearl & 2wayFix (forward) (iSize)	—	●	—	●
BeSafe iZi Kid X2 i-Size (iSize)	—	●	—	●
Maxi Cosi Cabriofix & FamilyFix (ISOFIX)	—	●	—	●
BeSafe iZi Kid X4 ISOfix (ISOFIX)	—	●	—	●
Britax Römer Duo Plus (ISOFIX)	—	●	—	●
Britax Römer KidFix XP (ISOFIX)	—	●	—	●
Maxi Cosi Cabriofix (Belt)	●	●	●	●
Maxi Cosi Cabriofix & EasyBase2 (Belt)	●	●	—	●
Britax Römer King II LS (Belt)	●	●	●	●
Britax Römer KidFix XP (Belt)	●	●	●	●

● Easy ● Difficult ● Safety critical ✖ Not allowed — Not available

Comments

In both the frontal offset and the side barrier impacts, protection was good for all critical body areas for the 6 and 10 year children. The front passenger airbag can be deactivated to allow a rearward-facing child restraint to be used in that seating position. Clear information is provided to the driver regarding the status of the airbag and the system was rewarded. All of the restraint types for which the Mazda 6 is designed could be properly installed and accommodated in the car.



VULNERABLE ROAD USERS

Total 31.9 Pts / 66%

GOOD ADEQUATE MARGINAL WEAK POOR

VRU Impact Protection

27.0 / 36 Pts



Head Impact	20.0 Pts
Pelvis Impact	1.0 Pts
Leg Impact	6.0 Pts

Vulnerable Road Users

4.8 / 12 Pts

System Name	Advanced Smart City Brake Support
Type	Auto-Brake with Forward Collision Warning
Operational From	10 km/h

Comments

The Mazda 6 has an active, deployable bonnet. Sensors in the bumper detect when a pedestrian has been struck and actuators lift the bonnet to provide greater clearance to hard structures in the engine compartment. Mazda showed that the system worked robustly for different pedestrian statures and over a range of speeds, so tests were done with the bonnet in the raised position. The protection to the head of a struck pedestrian was good over almost the entire bonnet surface. The bumper provided good protection to pedestrians' legs but protection of the pelvis was predominantly poor. The AEB system performed well in tests of its reaction to pedestrians, in daylight and in low light but does not react to cyclists.



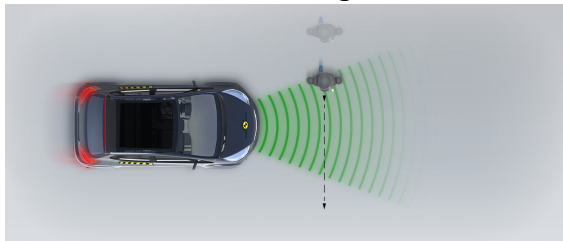
VULNERABLE ROAD USERS

Total 31.9 Pts / 66%

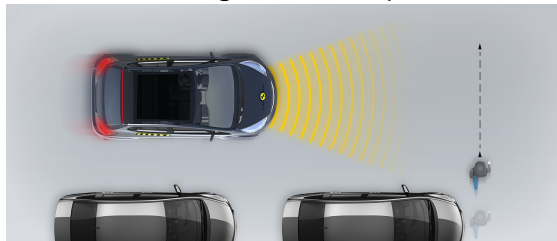
AEB Pedestrian

■ Day time

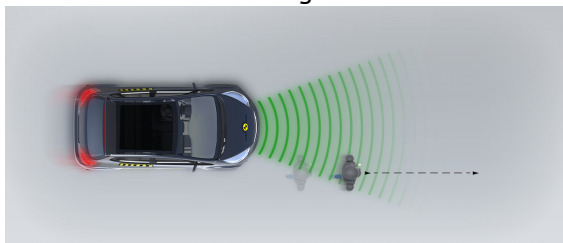
Adult crossing the road



Child running from behind parked vehicles

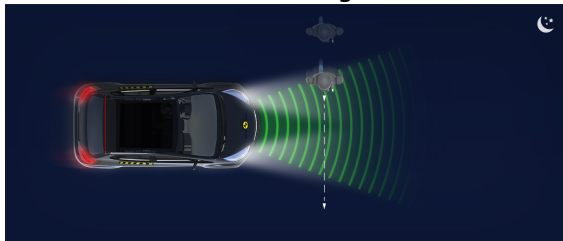


Adult along the roadside

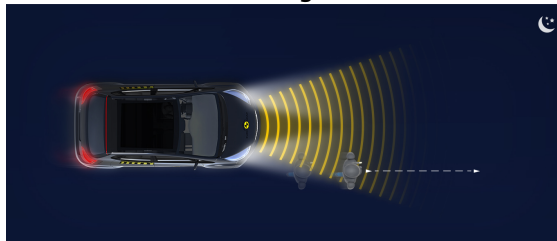


■ Night time

Adult crossing the road



Adult along the roadside





SAFETY ASSIST

Total 9.5 Pts / 73%

 GOOD


 ADEQUATE

 MARGINAL

 WEAK


 POOR









Speed Assistance



 2.4 / 3 Pts

System Name	Traffic Sign Recognition System (TSR) and Intelligent Speed Assistance (ISA)
Speed Limit Information Function	Camera & Map
Speed Limitation Function	System advised (accurate to 5km/h)


Seatbelt Reminder




 2.5 / 3 Pts

Applies To	Not available		
Warning	Driver Seat	Front Passenger(s)	Rear Passenger(s)
Visual			
Audible			
Occupant Detection	—		

 Pass
  Fail
 — Not available

Lane Support

 2.0 / 4 Pts

System Name	Lane-Keep Assist System (LAS) & Lane Departure Warning System (LDWS)
Type	LKA
Operational From	60 km/h
PERFORMANCE	
Emergency Lane Keeping	 NOT AVAILABLE
Lane Keep Assist	 GOOD
Human Machine Interface	 GOOD



SAFETY ASSIST

Total 9.5 Pts / 73%

AEB Inter-Urban

2.6 / 3 Pts

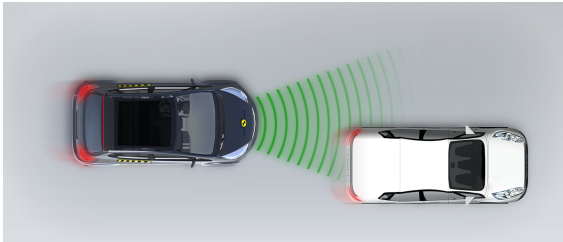
System Name	Advanced Smart City Brake Support & Smart Brake Support
Type	Autonomous Emergency Braking and Forward Collision Warning
Operational From	4 km/h
Additional Information	Supplementary warning

Comments

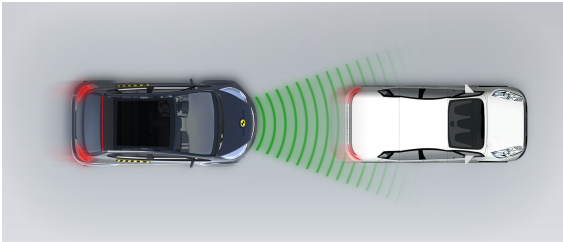
The AEB system performed well when tested at highway speeds, with collisions avoided or mitigated in most situations. The Mazda 6 has a seatbelt reminder for the front and rear seats and a speed assistance system which informs the driver of the local speed limit, allowing the driver to set the limiter appropriately. A lane keeping assist system is also standard, and helps avoid inadvertent drifting out of lane, but does not intervene in more critical emergency situations.

■ Autobrake function only

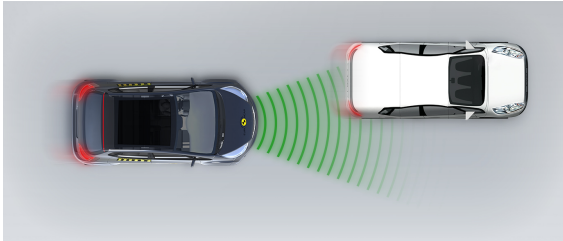
Approaching a slower moving car



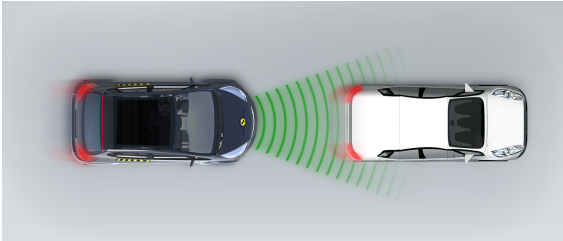
Approaching a slower moving car



Approaching a slower moving car



Approaching a braking car



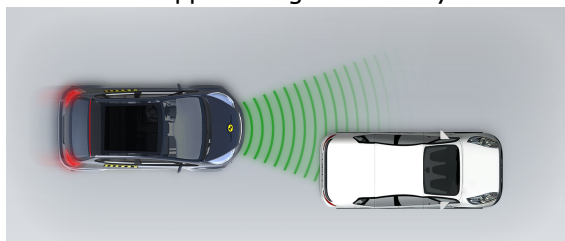


SAFETY ASSIST

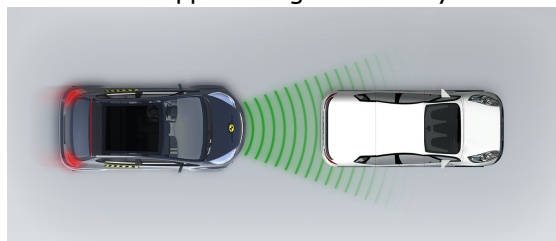
Total 9.5 Pts / 73%

■ Driver reacts to warning

Approaching a stationary car



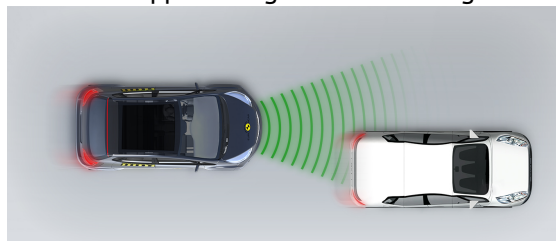
Approaching a stationary car



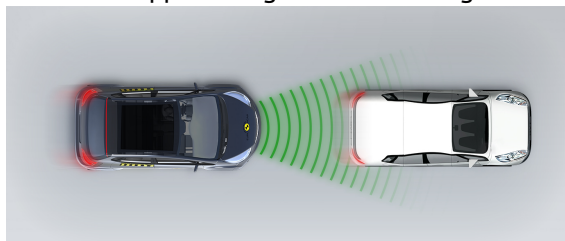
Approaching a stationary car



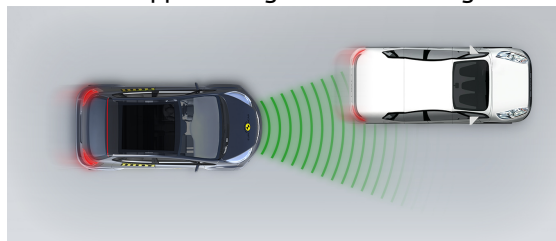
Approaching a slower moving car



Approaching a slower moving car



Approaching a slower moving car



Approaching a braking car



RATING VALIDITY

Variants of Model Range

Annual Reviews and Facelifts

Date	Event	Outcome	
October 2018	Rating Published	2018 ★ ★ ★ ★ ★	✓
October 2019	Annual Review	2018 ★ ★ ★ ★ ★	✓
October 2020	Annual Review	2018 ★ ★ ★ ★ ★	✓
October 2021	Annual Review	2018 ★ ★ ★ ★ ★	✓
October 2022	Annual Review	2018 ★ ★ ★ ★ ★	✓
September 2023	Annual Review	2018 ★ ★ ★ ★ ★	✓