



Nissan Ariya
Standard Safety Equipment

2022



Adult Occupant



86%

Child Occupant



89%

Vulnerable Road Users



74%

Safety Assist



93%

SPECIFICATION

Tested Model	Nissan Ariya, 160kW, LHD
Body Type	- 5 door SUV
Year Of Publication	2022
Kerb Weight	1914kg
VIN From Which Rating Applies	- all Ariyas
Class	Small SUV

SAFETY EQUIPMENT

	Driver	Passenger	Rear
FRONTAL CRASH PROTECTION			
Frontal airbag	●	●	✘
Belt pretensioner	●	●	●
Belt loadlimiter	●	●	●
Knee airbag	✘	✘	✘
LATERAL CRASH PROTECTION			
Side head airbag	●	●	●
Side chest airbag	●	●	✘
Side pelvis airbag	✘	✘	✘
Centre Airbag	●	✘	—
CHILD PROTECTION			
Isofix/i-Size	—	✘	●
Integrated CRS	—	✘	✘
Airbag cut-off switch	—	●	—
SAFETY ASSIST			
Seat Belt Reminder	●	●	●

SAFETY EQUIPMENT (NEXT)

	Driver	Passenger	Rear
CHILD PROTECTION			
Isofix/i-Size	—	✗	●
Integrated CRS	—	✗	✗
Airbag cut-off switch	—	●	—
SAFETY ASSIST			
Seat Belt Reminder	●	●	●

OTHER SYSTEMS	
Active Bonnet	✗
AEB Vulnerable Road Users	●
AEB Pedestrian - Reverse	●
AEB Car-to-Car	●
Speed Assistance	●
Lane Assist System	●

Note: Other equipment may be available on the vehicle but was not considered in the test year.


- Fitted to the vehicle as standard
 ○ Fitted to the vehicle as part of the safety pack
○ Not fitted to the test vehicle but available as option or as part of the safety pack
 ✗ Not available
 — Not applicable

 ADULT OCCUPANT

Total 33.0 Pts / 86%


 GOOD  ADEQUATE  MARGINAL  WEAK  POOR

Frontal Impact 13.8 / 16 Pts




Mobile Progressive Deformable Barrier Full Width Rigid Barrier

Lateral Impact 14.9 / 16 Pts



Side Mobile Barrier Side Pole Far-Side Excursion Occupant Interaction

Rear Impact 3.3 / 4 Pts




Rear Seat Front Seat


ADULT OCCUPANT

Total 33.0 Pts / 86%

GOOD
 ADEQUATE
 MARGINAL
 WEAK
 POOR

Rescue and Extrication		1.0 / 2 Pts
Rescue Sheet	Available, ISO compliant	
Advanced eCall	Available	
Multi Collision Brake	Not available	

Comments

The passenger compartment of the Ariya remained stable in the frontal offset test. Dummy readings indicated good protection of the knees and femurs of both the driver and passenger. Nissan demonstrated that a similar level of protection would be provided to occupants of different sizes and to those sitting in different positions. Analysis of the deceleration of the impact trolley during the test, and analysis of the deformable barrier after the test, revealed that the Ariya would be a moderately benign impact partner in a frontal collision. In the full-width rigid barrier test, protection of the rear passenger's chest was rated as marginal, based on measured values of dummy chest compression but protection was otherwise good or adequate. In the side barrier test, protection of all critical body areas was good or adequate. In the more severe side pole impact, protection of the chest was rated as marginal, based on readings of dummy rib compression. Control of excursion (the extent to which a body is thrown to the other side of the vehicle when it is hit from the far side) was found to be marginal. The Ariya has a counter-measure to mitigate against occupant to occupant injuries in such impacts. The system performed well in Euro NCAP's test, with good protection of occupants' heads. Tests on the front seats and head restraints demonstrated good protection against whiplash injuries in the event of a rear-end collision. A geometric analysis of the rear seats also indicated good whiplash protection. The Ariya has an advanced eCall system which alerts the emergency services in the event of a crash but it lacks a system to prevent secondary collisions in the event of an accident.

CHILD OCCUPANT

Total 43.9 Pts / 89%

GOOD
 ADEQUATE
 MARGINAL
 WEAK
 POOR

Crash Test Performance based on 6 & 10 year old children

22.9 / 24 Pts



Restraint for 6 year old child: *Britax Römer Kidfix R*
 Restraint for 10 year old child: *GRACO Booster*

Safety Features

9.0 / 13 Pts

	Front Passenger	2nd row outboard	2nd row center
Isofix	✘	●	✘
i-Size	✘	●	✘
Integrated CRS	✘	✘	✘

Fitted to test car as standard
 Not on test car but available as option
 ✘ Not available

CRS Installation Check

12.0 / 12 Pts

● Install without problem ● Install with care ● Safety critical problem ✗ Installation not allowed

■ i-Size CRS

Maxi Cosi 2way Pearl & 2wayFix (i-Size)



Maxi Cosi 2way Pearl & 2wayFix (i-Size)



BeSafe iZi Kid X2 i-Size (i-Size)



Britax Römer TriFix2 i-Size (i-Size)



BeSafe iZi Flex FIX i-Size (i-Size)



■ ISOFIX CRS

BeSafe iZi Combi X4 ISOfix (ISOFIX)



Cybex Solution Z i-Fix (ISOFIX)



CHILD OCCUPANT

Total 43.9 Pts / 89%

- Universal Belted CRS

Maxi Cosi Cabriofix (Belt)



Maxi Cosi Cabriofix & EasyFix (Belt)



Britax Römer King II LS (Belt)



Cybex Solution Z i-Fix (Belt)



Comments

The Ariya provided good or adequate protection for all critical body regions of both the 6 and 10 year dummies in the frontal offset and side barrier tests, and scored maximum points in this part of the assessment. The front passenger airbag can be disabled to allow a rearward-facing child restraint to be used in that seating position. All of the child restraint types for which the Ariya is designed could be properly installed and accommodated.

CHILD OCCUPANT

Total 43.9 Pts / 89%

	Seat Position			
	Front	2nd row		
	PASSENGER	LEFT	CENTER	RIGHT
Maxi Cosi 2way Pearl & 2wayFix (i-Size)	—	●	—	●
Maxi Cosi 2way Pearl & 2wayFix (i-Size)	—	●	—	●
BeSafe iZi Kid X2 i-Size (i-Size)	—	●	—	●
Britax Römer TriFix2 i-Size (i-Size)	—	●	—	●
BeSafe iZi Flex FIX i-Size (i-Size)	—	●	—	●
BeSafe iZi Combi X4 ISOfix (ISOFIX)	—	●	—	●
Cybex Solution Z i-Fix (ISOFIX)	—	●	—	●
Maxi Cosi Cabriofix (Belt)	●	●	●	●
Maxi Cosi Cabriofix & EasyFix (Belt)	●	●	✘	●
Britax Römer King II LS (Belt)	●	●	●	●
Cybex Solution Z i-Fix (Belt)	●	●	●	●

● Easy ● Difficult ● Safety critical ✘ Not allowed — Not available

Comments

The Ariya provided good or adequate protection for all critical body regions of both the 6 and 10 year dummies in the frontal offset and side barrier tests, and scored maximum points in this part of the assessment. The front passenger airbag can be disabled to allow a rearward-facing child restraint to be used in that seating position. All of the child restraint types for which the Ariya is designed could be properly installed and accommodated.

VULNERABLE ROAD USERS

Total 40.4 Pts / 74%



VRU Impact Protection

25.8 / 36 Pts



Head Impact	15.6 Pts
Pelvis Impact	4.2 Pts
Leg Impact	6.0 Pts

Vulnerable Road Users


14.6 / 18 Pts

System Name	Intelligent Emergency Braking (IEB)
Type	Auto-Brake with Forward Collision Warning
Operational From	10 km/h

 VULNERABLE ROAD USERS

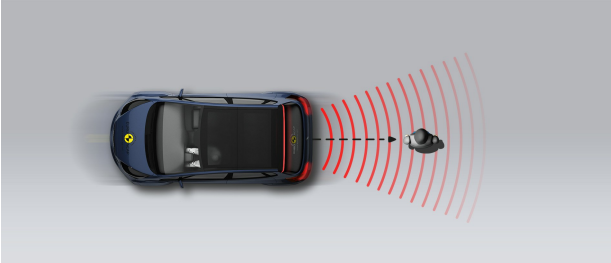
Total 40.4 Pts / 74%

AEB Pedestrian

 7.0 / 9 Pts

■ Day time

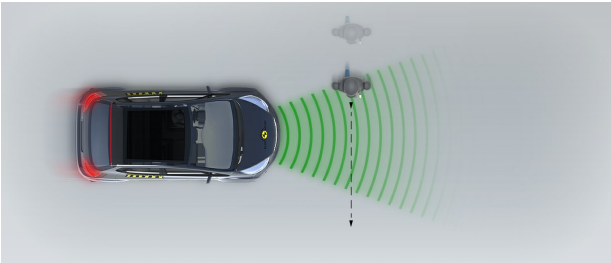
Vehicle reversing into standing pedestrian



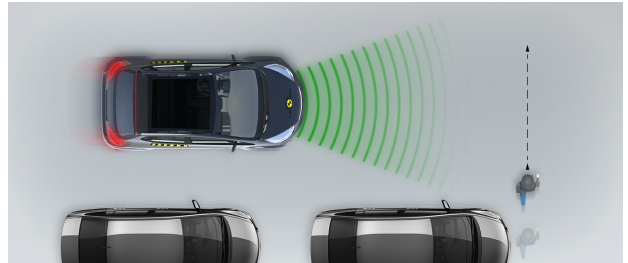
Pedestrian crossing a road into which a car is turning



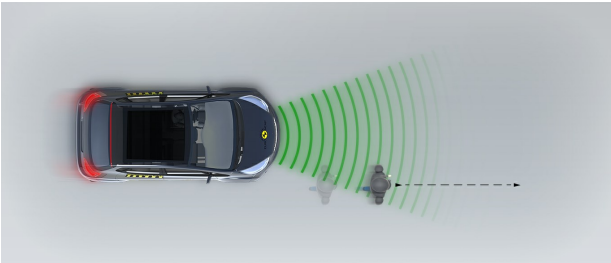
Adult crossing the road



Child running from behind parked vehicles



Adult along the roadside

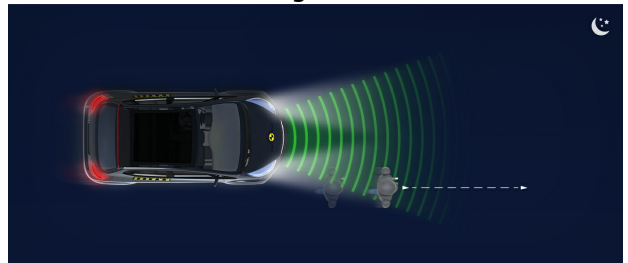


■ Night time

Adult crossing the road




Adult along the roadside

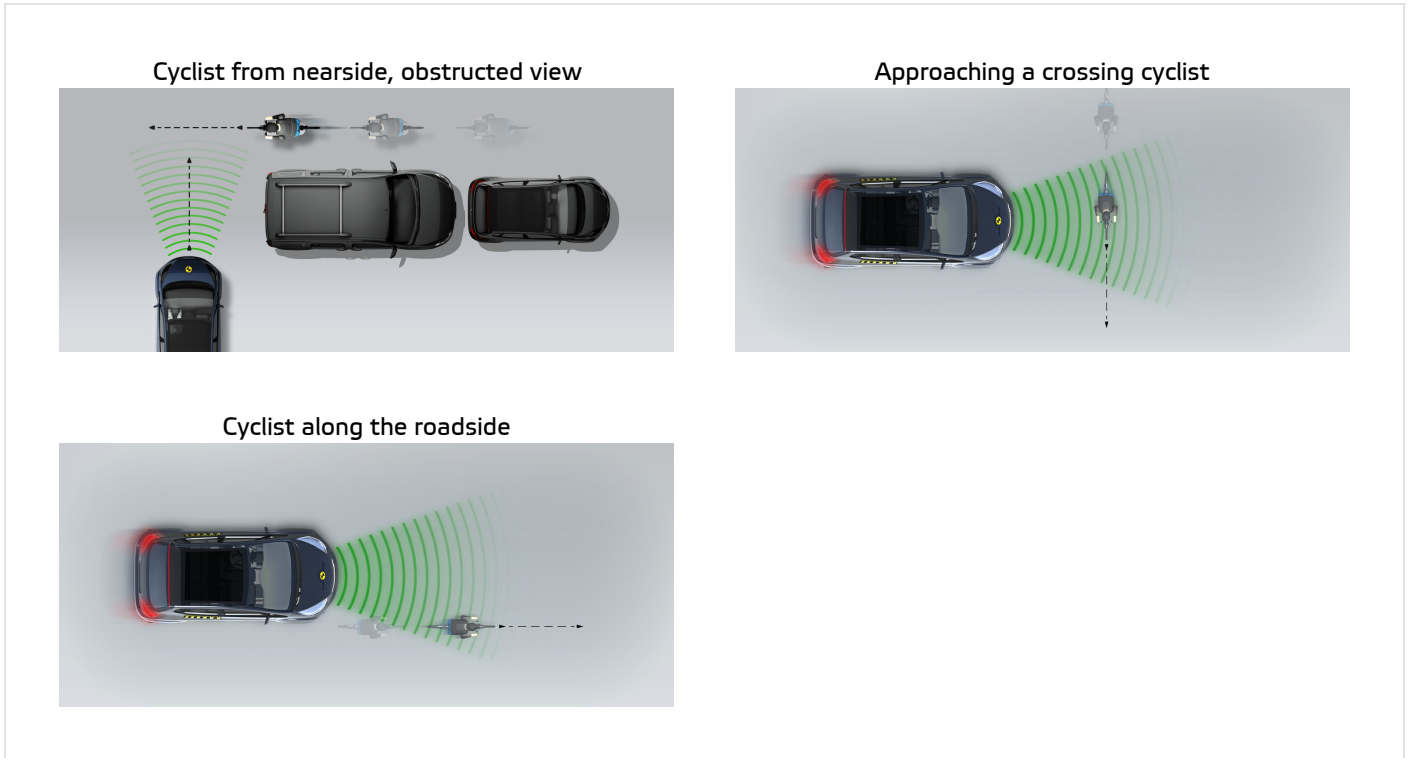


 VULNERABLE ROAD USERS

Total 40.4 Pts / 74%

AEB Cyclist

 7.6 / 9 Pts



Comments

Protection of the head of struck pedestrian was predominantly good or adequate with some poor areas at the bottom of the windscreen and on the stiff windscreen pillars. The bumper offered good protection to pedestrians' legs but protection of the pelvis region was mixed. The autonomous emergency braking (AEB) system of the Ariya can respond to vulnerable road users as well as to other vehicles. The system performed well in tests of its response to pedestrians and cyclists, with collisions avoided in most test scenarios.

SAFETY ASSIST

Total 15.0 Pts / 93%

GOOD
 ADEQUATE
 MARGINAL
 WEAK
 POOR

Speed Assistance 2.6 / 3 Pts

System Name	Traffic Sign Recognition
Speed Limit Information Function	Camera & Map, subsigns supported
Speed Limitation Function	System advised (accurate to 5km/h)

Occupant Status Monitoring 3.0 / 3 Pts

> Seatbelt Reminder 2.0 / 2 Pts

Applies To	Front and rear seats, including third row		
Warning	Driver Seat	Front Passenger(s)	Rear Passenger(s)
Visual	●	●	●
Audible	●	●	●
Occupant Detection	—	●	●

● Pass
 ● Fail
 — Not available

> Driver Monitoring 1.0 / 1 Pts

System Name	Intelligent Driver Alertness
Type	steering input
Operational From	60 km/h

SAFETY ASSIST

Total 15.0 Pts / 93%

Lane Support

4.0 / 4 Pts

System Name	Intelligent Lane Intervention (ILI) and Emergency Lane Assist (ELA)	
Type	LKA and ELK	
Operational From	60 km/h	
PERFORMANCE		
Emergency Lane Keeping		GOOD
Lane Keep Assist		GOOD
Human Machine Interface		GOOD

AEB Car-to-Car

5.4 / 6 Pts

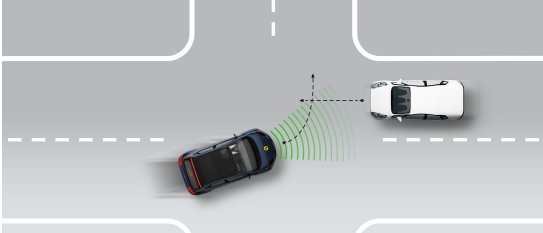
System Name	Intelligent Emergency Braking (IEB)	
Type	Autonomous emergency braking and forward collision warning	
Operational From	5 km/h	
Sensor Used	camera and radar	

 SAFETY ASSIST

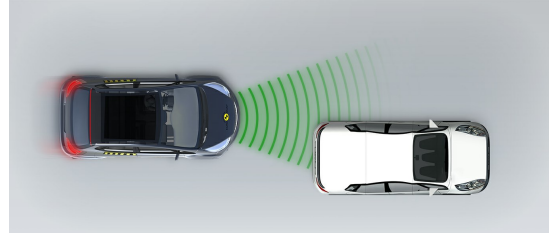
Total 15.0 Pts / 93%

■ Autobrake function only

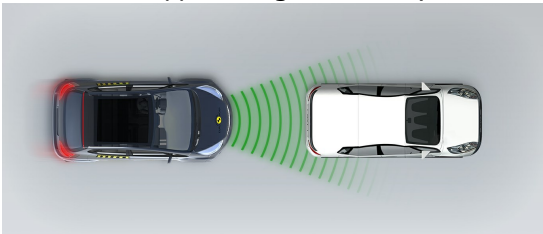
Car turning across the path of an oncoming car



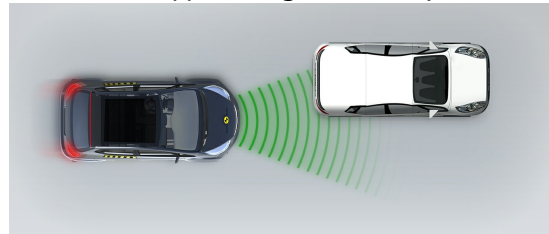
Approaching a stationary car



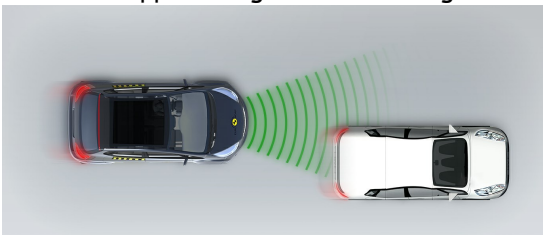
Approaching a stationary car



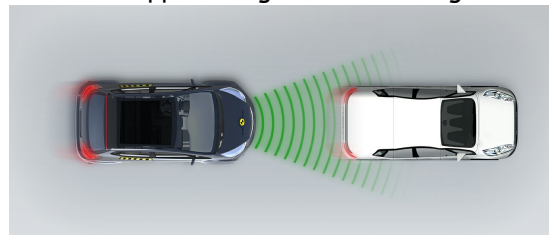
Approaching a stationary car



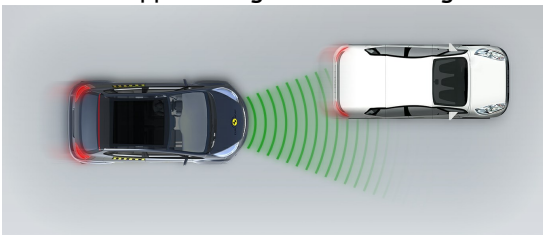
Approaching a slower moving car



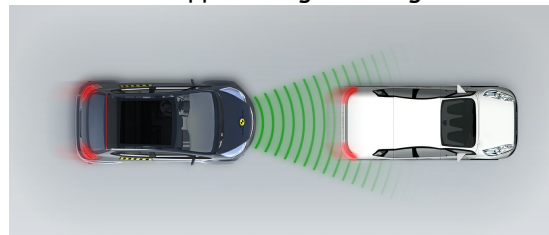
Approaching a slower moving car



Approaching a slower moving car



Approaching a braking car

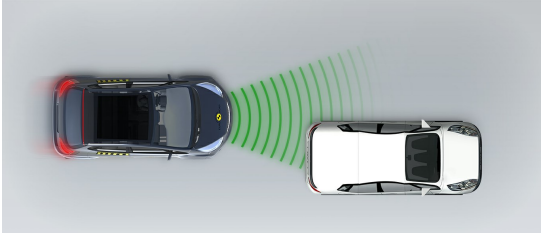


 SAFETY ASSIST

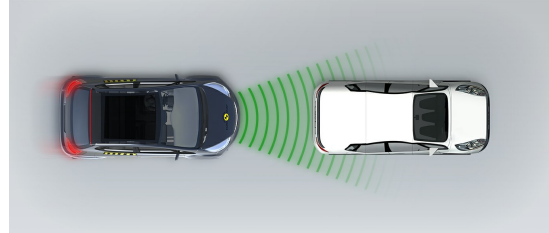
Total 15.0 Pts / 93%

■ Driver reacts to warning

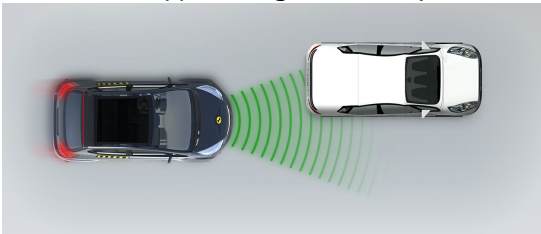
Approaching a stationary car



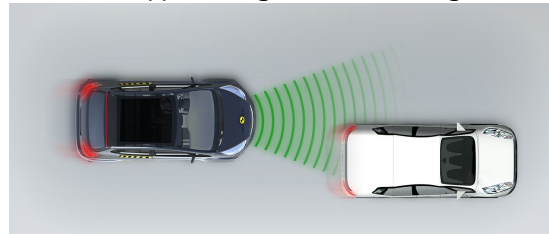
Approaching a stationary car



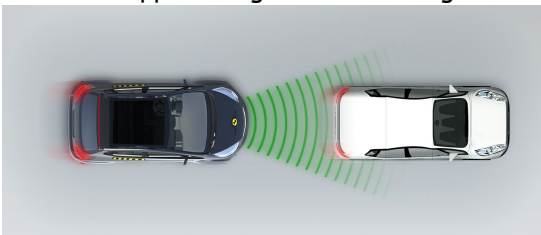
Approaching a stationary car



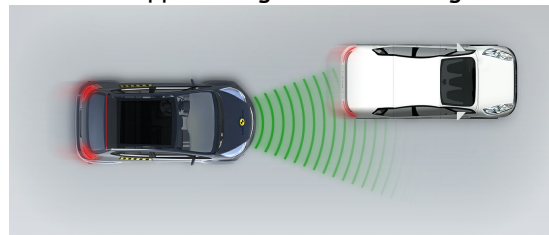
Approaching a slower moving car



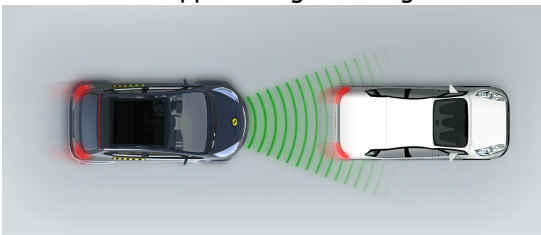
Approaching a slower moving car



Approaching a slower moving car



Approaching a braking car





SAFETY ASSIST

Total 15.0 Pts / 93%

Comments

The Ariya's autonomous emergency braking (AEB) system performed well in tests of its reaction to other vehicles. A seatbelt reminder system is fitted as standard to the front and rear seats and the car is equipped with a system to detect driver fatigue. The lane support system gently corrects the vehicle's path if it is drifting out of lane, and also intervenes in some more critical situations. A speed assistance system detects the local speed limit and the driver can choose to set the limiter or let the system do so automatically.

RATING VALIDITY

Variants of Model Range

Body Type	Engine	Model Name/Code	Drivetrain	Rating Applies	
				LHD	RHD
5 door SUV	160kW, 63kWh electric	Ariya 63 kWh *	4 x 2	✓	✓
5 door SUV	178kW, 87kWh electric	Ariya 87 kWh	4 x 4	✓	✓

* Tested variant

Annual Reviews and Facelifts

Date	Event	Outcome
November 2022	Rating Published	2022 ★★★★★ ✓