



Volkswagen Touareg
Standard Safety Equipment

2018



Adult Occupant



89%

Child Occupant



86%

Vulnerable Road Users



72%

Safety Assist



81%

SPECIFICATION

Tested Model	VW Touareg 3.0 diesel "Elegance", LHD
Body Type	- 5 door SUV
Year Of Publication	2018
Kerb Weight	2065kg
VIN From Which Rating Applies	- all Touaregs, including PHEV (from 2021)
Class	Large SUV

X Rating Expired

SAFETY EQUIPMENT

	Driver	Passenger	Rear
FRONTAL CRASH PROTECTION			
Frontal airbag	●	●	—
Belt pretensioner	●	●	✘
Belt loadlimiter	●	●	●
Knee airbag	○	○	—
SIDE CRASH PROTECTION			
Side head airbag	●	●	●
Side chest airbag	●	●	○
Side pelvis airbag	●	●	○
CHILD PROTECTION			
Isofix/i-Size	—	✘	●
Integrated CRS	—	✘	✘
Airbag cut-off switch	—	●	—
SAFETY ASSIST			
Seat Belt Reminder	●	●	●

SAFETY EQUIPMENT (NEXT)

	Driver	Passenger	Rear
CHILD PROTECTION			
Isofix/i-Size	—	×	●
Integrated CRS	—	×	×
Airbag cut-off switch	—	●	—
SAFETY ASSIST			
Seat Belt Reminder	●	●	●

OTHER SYSTEMS	
Active Bonnet (Hood)	●
AEB Pedestrian	●
AEB City	●
AEB Cyclist	●
AEB Inter-Urban	●
Speed Assistance System	●
Lane Assist System	●

Note: Other equipment may be available on the vehicle but was not considered in the test year.


- Fitted to the vehicle as standard
 ○ Fitted to the vehicle as part of the safety pack
○ Not fitted to the test vehicle but available as option or as part of the safety pack
 × Not available
 — Not applicable

 ADULT OCCUPANT

Total 33.9 Pts / 89%

 GOOD  ADEQUATE  MARGINAL  WEAK  POOR

Frontal Offset Deformable Barrier 6.7 / 8 Pts




Passenger Driver

Frontal Full Width 7 / 8 Pts




Rear Passenger Driver

Whiplash Rear Impact 1.6 / 2 Pts



Front seat Rear seat


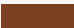
Lateral Impact 14.9 / 16 Pts

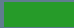


Car Pole

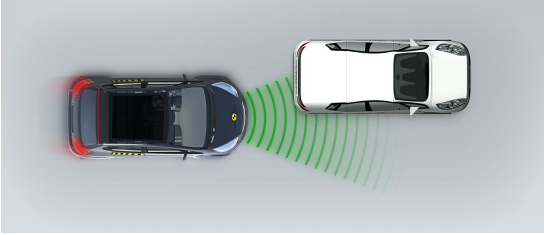
 ADULT OCCUPANT

Total 33.9 Pts / 89%

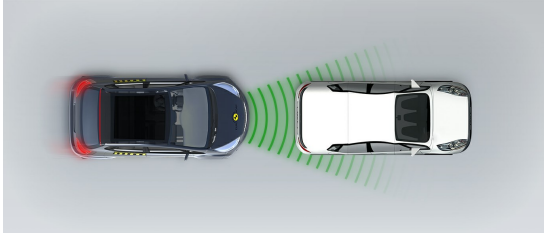
 GOOD  ADEQUATE  MARGINAL  WEAK  POOR

AEB City  3.7 / 4 Pts

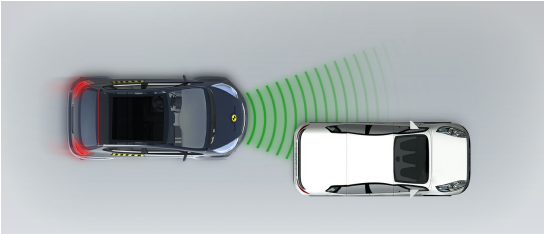
Approaching a stationary car: Left Offset



Approaching a stationary car: No Offset



Approaching a stationary car: Right Offset



 ADULT OCCUPANT

Total 33.9 Pts / 89%

Comments

The passenger compartment of the Touareg remained stable in the front offset test. Dummy readings showed good protection of the knees and femurs of both the driver and passenger. VW showed that a similar level of protection would be provided to occupants of different sizes and to those sitting in different positions. Protection of the chest of the driver dummy was rated as marginal, based on dummy readings of compression during the test. Chest compression of both the driver and passenger dummy also led to a marginal rating for protection of this body area in the full-width rigid barrier test, all other areas being well or adequately protected. In the side barrier test, the Touareg scored maximum points with good protection of all body areas. In the more severe side pole test, protection of the chest was rated as marginal, based on dummy readings of rib deflection. Tests on the front seats and head restraints demonstrated good protection of the neck against whiplash injuries in the event of a rear-end collision. A geometric assessment of the rear seats also indicated good whiplash protection. The autonomous emergency braking (AEB) system performed well in tests of its functionality at the low speeds, typical of city driving, at which many whiplash injuries are caused.

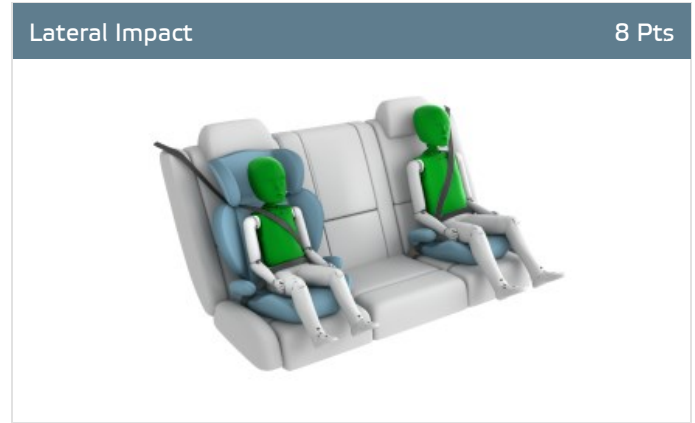
CHILD OCCUPANT

Total 42.4 Pts / 86%

GOOD
 ADEQUATE
 MARGINAL
 WEAK
 POOR

Crash Test Performance based on 6 & 10 year old children

23.4 / 24 Pts



Restraint for 6 year old child: *Britax Römer KidFix XP*
 Restraint for 10 year old child: *Booster Cushion*

Safety Features

7.0 / 13 Pts

	Front Passenger	2nd row outboard	2nd row center
Isofix	✘	●	✘
i-Size	✘	●	✘
Integrated CRS	✘	✘	✘

Fitted to test car as standard
 Not on test car but available as option
 ✘ Not available

CRS Installation Check

12.0 / 12 Pts

● Install without problem
 ● Install with care
 ● Safety critical problem
 ✘ Installation not allowed

■ i-Size CRS

Maxi Cosi 2way Pearl & 2wayFix (rearward) (iSize)



Maxi Cosi 2way Pearl & 2wayFix (forward) (iSize)



BeSafe iZi Kid X2 i-Size (iSize)



■ ISOFIX CRS

Maxi Cosi Cabriofix & FamilyFix (ISOFIX)



BeSafe iZi Kid X4 ISOfix (ISOFIX)




Britax Römer Duo Plus (ISOFIX)



Britax Römer KidFix XP (ISOFIX)



 CHILD OCCUPANT

Total 42.4 Pts / 86%

■ Universal Belted CRS

Maxi Cosi Cabriofix (Belt)



Maxi Cosi Cabriofix & EasyBase2 (Belt)



Britax Römer King II LS (Belt)



Britax Römer KidFix XP (Belt)



Comments

In the frontal offset test, all critical body areas were well or adequately protected. In the side barrier impact, all body areas were well protected. The front passenger airbag can be disabled to allow a rearward-facing child restraint to be used in that seating position. Clear information is provided to the driver regarding the status of the airbag and the system was rewarded. All of the child restraints for which the Touareg is designed could be properly installed and accommodated.

CHILD OCCUPANT

Total 42.4 Pts / 86%

	Seat Position			
	Front	2nd row		
	PASSENGER	LEFT	CENTER	RIGHT
Maxi Cosi 2way Pearl & 2wayFix (rearward) (iSize)	—	●	—	●
Maxi Cosi 2way Pearl & 2wayFix (forward) (iSize)	—	●	—	●
BeSafe iZi Kid X2 i-Size (iSize)	—	●	—	●
Maxi Cosi Cabriofix & FamilyFix (ISOFIX)	—	●	—	●
BeSafe iZi Kid X4 ISOfix (ISOFIX)	—	●	—	●
Britax Römer Duo Plus (ISOFIX)	—	●	—	●
Britax Römer KidFix XP (ISOFIX)	—	●	—	●
Maxi Cosi Cabriofix (Belt)	●	●	●	●
Maxi Cosi Cabriofix & EasyBase2 (Belt)	●	●	✘	●
Britax Römer King II LS (Belt)	●	●	●	●
Britax Römer KidFix XP (Belt)	●	●	●	●

● Easy ● Difficult ● Safety critical ✘ Not allowed — Not available

Comments

In the frontal offset test, all critical body areas were well or adequately protected. In the side barrier impact, all body areas were well protected. The front passenger airbag can be disabled to allow a rearward-facing child restraint to be used in that seating position. Clear information is provided to the driver regarding the status of the airbag and the system was rewarded. All of the child restraints for which the Touareg is designed could be properly installed and accommodated.

VULNERABLE ROAD USERS

Total 34.6 Pts / 72%

GOOD
 ADEQUATE
 MARGINAL
 WEAK
 POOR

VRU Impact Protection	25.3 / 36 Pts						
	<table border="1" style="width: 100%; border-collapse: collapse;"> <tr> <td style="padding: 5px;">Head Impact</td> <td style="text-align: right; padding: 5px;">18.5 Pts</td> </tr> <tr> <td style="padding: 5px;">Pelvis Impact</td> <td style="text-align: right; padding: 5px;">0.8 Pts</td> </tr> <tr> <td style="padding: 5px;">Leg Impact</td> <td style="text-align: right; padding: 5px;">6.0 Pts</td> </tr> </table>	Head Impact	18.5 Pts	Pelvis Impact	0.8 Pts	Leg Impact	6.0 Pts
Head Impact	18.5 Pts						
Pelvis Impact	0.8 Pts						
Leg Impact	6.0 Pts						

Vulnerable Road Users		9.3 / 12 Pts
System Name	Front Assist	
Type	Auto-Brake with Forward Collision Warning	
Operational From	5 km/h	

Comments

The Touareg has a 'pop-up' bonnet for additional pedestrian protection. Sensors at the front of the car detect when a pedestrian has been struck and actuators raise the bonnet to provide greater clearance of the hard structures in the engine compartment. VW showed that the system worked robustly for different pedestrian statures and over a range of speeds, so the car was tested with the bonnet in the raised position. Protection of the head was almost entirely good or adequate. The bumper provided good protection to pedestrians' legs at all test sites, and maximum points were scored. However, protection of the pelvis area was poor at nearly all locations. The AEB system can detect vulnerable road users such as pedestrians and cyclists. Tests of its this functionality demonstrated good or adequate performance.

 VULNERABLE ROAD USERS

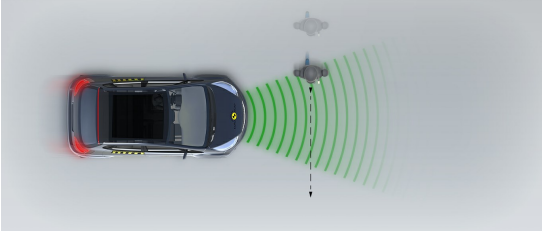
Total 34.6 Pts / 72%

AEB Pedestrian

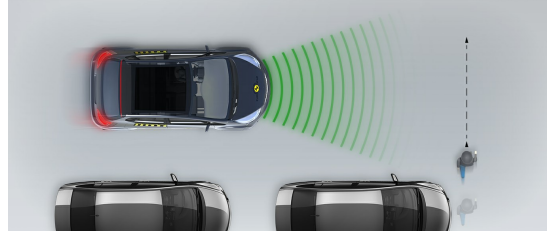


Day time

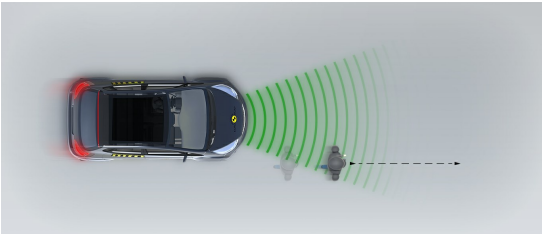
Adult crossing the road



Child running from behind parked vehicles

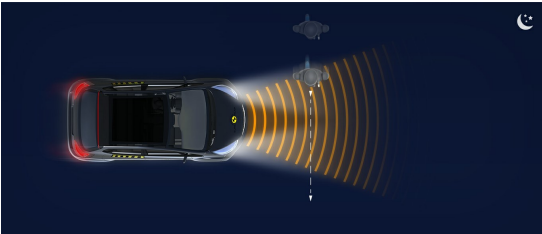


Adult along the roadside

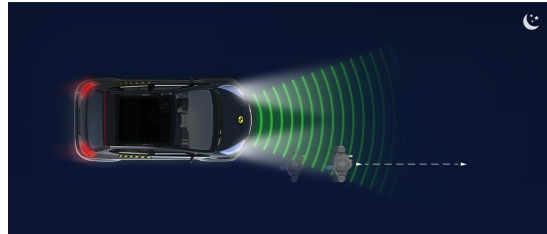


Night time

Adult crossing the road



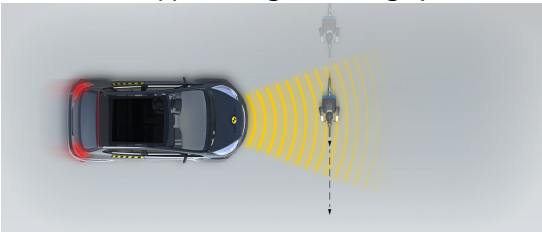
Adult along the roadside



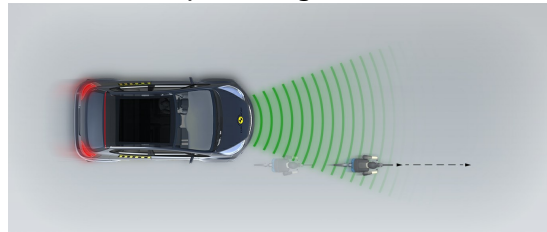
AEB Cyclist



Approaching a crossing cyclist



Cyclist along the roadside



SAFETY ASSIST

Total 10.6 Pts / 81%

GOOD
 ADEQUATE
 MARGINAL
 WEAK
 POOR

Speed Assistance

1.9 / 3 Pts

System Name	Sign Assist and Speedlimiter
Speed Limit Information Function	Camera & Map
Speed Limitation Function	Manually set (accurate to 5km/h)

Seatbelt Reminder

3.0 / 3 Pts

Applies To	Not available		
	Driver Seat	Front Passenger(s)	Rear Passenger(s)
Warning			
Visual	●	●	●
Audible	●	●	●
Occupant Detection	—	●	●

● Pass
 ● Fail
 — Not available

Lane Support

3.3 / 4 Pts

System Name	Lane Assist
Type	LKA (including LDW) and ELK
Operational From	60 km/h


PERFORMANCE

Emergency Lane Keeping	 GOOD
Lane Keep Assist	 GOOD
Human Machine Interface	 ADEQUATE

 SAFETY ASSIST

Total 10.6 Pts / 81%

AEB Inter-Urban

 2.4 / 3 Pts

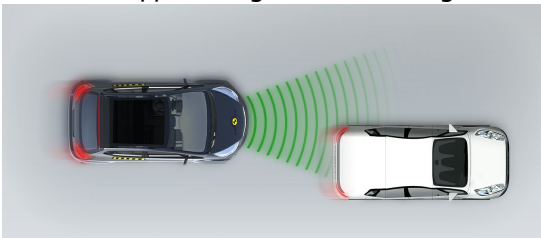
System Name	Front Assist
Type	Autonomous Emergency Braking and Forward Collision Warning
Operational From	9 km/h
Additional Information	Supplementary warning

Comments

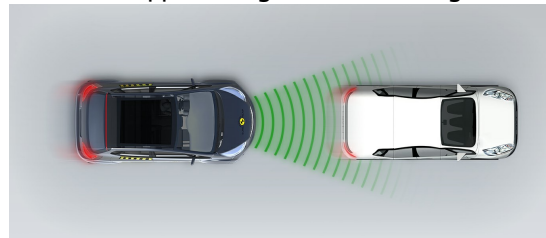
The AEB system performed well in tests of its functionality at highway speeds. The Touareg has a seatbelt reminder for front and rear seats. The speed assistance system, which consists of speed-limit recognition and a driver-set limiter, was rated as adequate. The lane support system helps to keep the driver from drifting out of lane but can also intervene in some emergency situations.

■ **Autobrake function only**

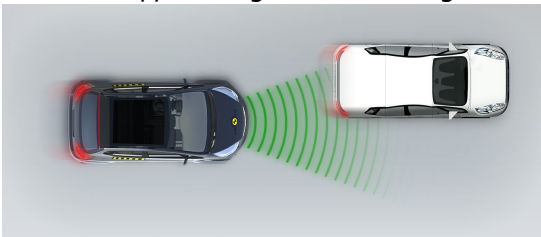
Approaching a slower moving car



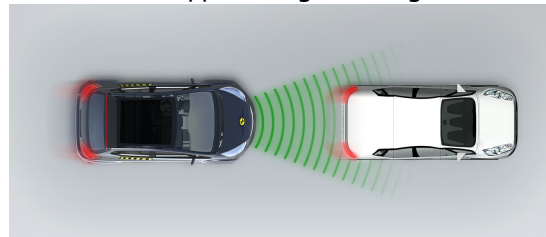
Approaching a slower moving car



Approaching a slower moving car



Approaching a braking car

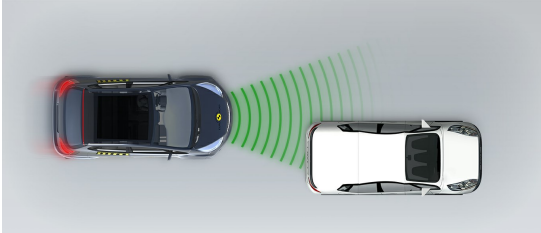


 SAFETY ASSIST

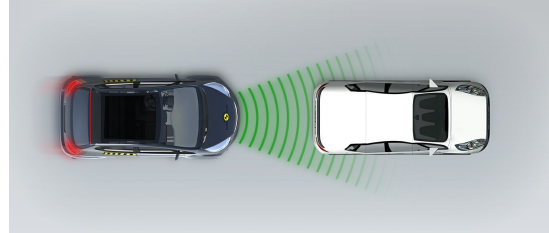
Total 10.6 Pts / 81%

■ Driver reacts to warning

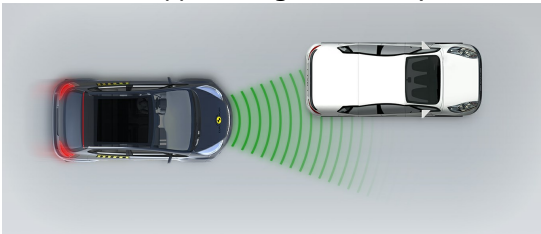
Approaching a stationary car



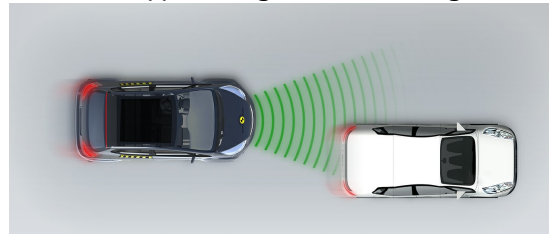
Approaching a stationary car



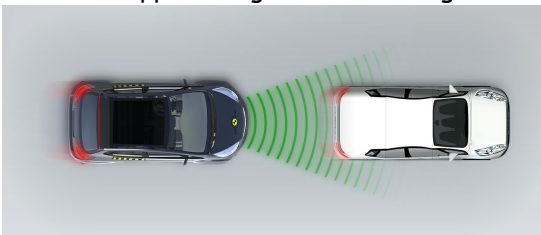
Approaching a stationary car



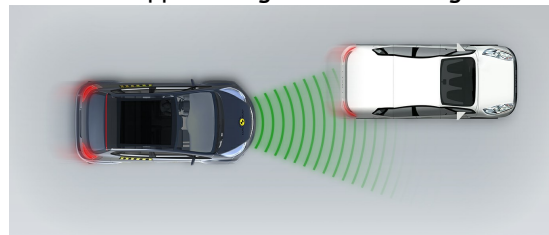
Approaching a slower moving car



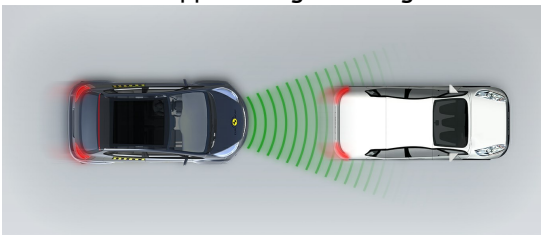
Approaching a slower moving car



Approaching a slower moving car



Approaching a braking car



RATING VALIDITY

Variants of Model Range

Body Type	Engine & Transmission	Drivetrain	Rating Applies	
			LHD	RHD
5 door SUV	3.0 diesel (210kW)*	4 x 4	✓	✓
5 door SUV	3.0 V6 TSI PHEV#	4 x 4	✓	✓

* Tested variant

additional tests performed 2021

Annual Reviews and Facelifts

Date	Event	Outcome
September 2018	Rating Published	2018 ★★★★★ ✓
October 2021	Addition of 3.0 V6 TSI PHEV variant	2018 ★★★★★ ✓
October 2023	Facelift Rerview	2018 ★★★★★ ✓