



Jaguar I Pace
Standard Safety Equipment

2018



Adult Occupant



91%

Child Occupant



81%

Vulnerable Road Users



73%

Safety Assist



81%

SPECIFICATION

Tested Model	I-PACE SE EV400
Body Type	- 5 door hatchback
Year Of Publication	2018
Kerb Weight	2180kg
VIN From Which Rating Applies	- all I Pace
Class	Executive Car

✗ Rating Expired

SAFETY EQUIPMENT

	Driver	Passenger	Rear
FRONTAL CRASH PROTECTION			
Frontal airbag	●	●	✘
Belt pretensioner	●	●	●
Belt loadlimiter	●	●	●
Knee airbag	✘	✘	✘
SIDE CRASH PROTECTION			
Side head airbag	●	●	●
Side chest airbag	●	●	✘
Side pelvis airbag	✘	✘	✘
CHILD PROTECTION			
Isofix/i-Size	—	✘	●
Integrated CRS	—	✘	✘
Airbag cut-off switch	—	●	—
SAFETY ASSIST			
Seat Belt Reminder	●	●	●

SAFETY EQUIPMENT (NEXT)

	Driver	Passenger	Rear
CHILD PROTECTION			
Isofix/i-Size	—	✗	●
Integrated CRS	—	✗	✗
Airbag cut-off switch	—	●	—
SAFETY ASSIST			
Seat Belt Reminder	●	●	●

OTHER SYSTEMS	
Active Bonnet (Hood)	●
AEB Pedestrian	●
AEB City	●
AEB Cyclist	●
AEB Inter-Urban	●
Speed Assistance System	●
Lane Assist System	●

Note: Other equipment may be available on the vehicle but was not considered in the test year.


- Fitted to the vehicle as standard
 ○ Fitted to the vehicle as part of the safety pack
○ Not fitted to the test vehicle but available as option or as part of the safety pack
 ✗ Not available
 — Not applicable

 ADULT OCCUPANT

Total 34.8 Pts / 91%


 GOOD  ADEQUATE  MARGINAL  WEAK  POOR

Frontal Offset Deformable Barrier 5.8 / 8 Pts




Passenger Driver

Frontal Full Width 7.6 / 8 Pts




Rear Passenger Driver

Whiplash Rear Impact 1.4 / 2 Pts



Front seat Rear seat

Lateral Impact 16.0 / 16 Pts

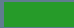


Car Pole

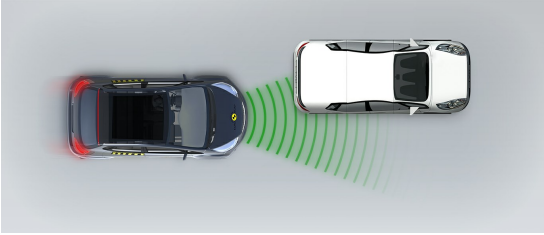
 ADULT OCCUPANT

Total 34.8 Pts / 91%

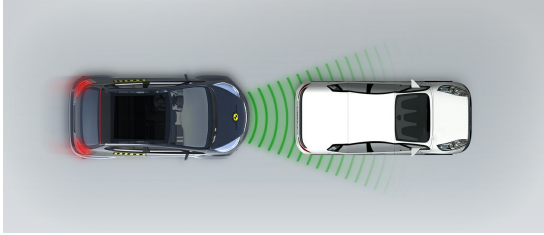
 GOOD  ADEQUATE  MARGINAL  WEAK  POOR

AEB City  4.0 / 4 Pts

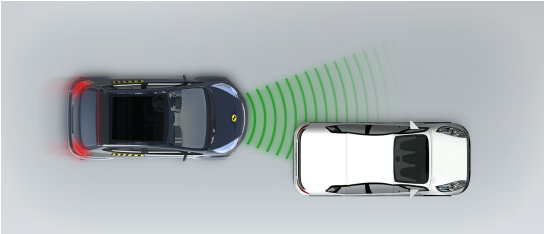
Approaching a stationary car: Left Offset



Approaching a stationary car: No Offset



Approaching a stationary car: Right Offset



 ADULT OCCUPANT

Total 34.8 Pts / 91%

Comments

The passenger compartment of the I-PACE remained stable in the frontal offset test. Dummy readings indicated good protection of the knees and femurs of the driver and passenger. Jaguar showed that a similar level of protection would be provided to occupants of different sizes and to those sitting in different positions for all but the passenger's right knee and femur, protection of which was rated as marginal. In the full-width rigid barrier test, protection of the chest was adequate for both the driver and rear passenger, and protection of all other critical body areas was good. In both the side barrier impact and the more severe side pole test, maximum points were scored, with good protection of all critical body areas. Tests on the front seats and head restraints demonstrated good protection against whiplash injuries in the event of a rear-end collision. A geometric assessment of the rear seats indicated marginal whiplash protection. The standard-fit autonomous emergency braking system performed well in tests of its functionality at the low speeds, typical of city driving, at which many whiplash injuries are caused.

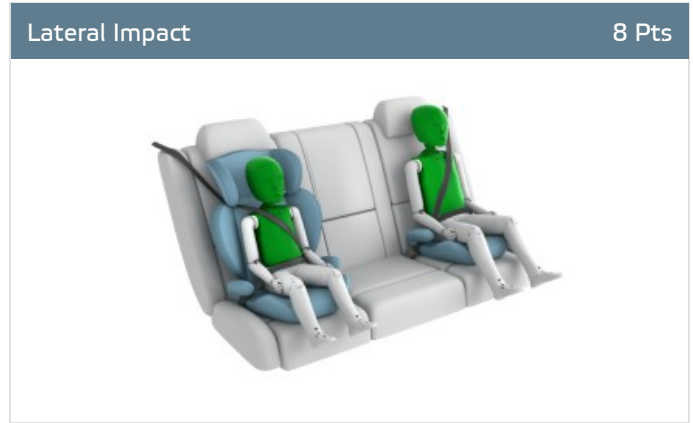
CHILD OCCUPANT

Total 40.0 Pts / 81%

GOOD
 ADEQUATE
 MARGINAL
 WEAK
 POOR

Crash Test Performance based on 6 & 10 year old children

21.0 / 24 Pts



Restraint for 6 year old child: *Britax Römer Kidfix XP SICT*
 Restraint for 10 year old child: *Booster Cushion*

Safety Features

7.0 / 13 Pts

	Front Passenger	2nd row outboard	2nd row center
Isofix	✘	●	✘
i-Size	✘	●	✘
Integrated CRS	✘	✘	✘

Fitted to test car as standard
 Not on test car but available as option
 ✘ Not available

CRS Installation Check

12.0 / 12 Pts

● Install without problem
 ● Install with care
 ● Safety critical problem
 ✗ Installation not allowed

■ i-Size CRS

Maxi Cosi 2way Pearl & 2wayFix (rearward) (iSize)



Maxi Cosi 2way Pearl & 2wayFix (forward) (iSize)



BeSafe iZi Kid X2 i-Size (iSize)



■ ISOFIX CRS

Maxi Cosi Cabriofix & FamilyFix (ISOFIX)



BeSafe iZi Kid X4 ISOfix (ISOFIX)



Britax Römer Duo Plus (ISOFIX)



Britax Römer KidFix XP (ISOFIX)



CHILD OCCUPANT

Total 40.0 Pts / 81%

■ Universal Belted CRS

Maxi Cosi Cabriofix (Belt)



Maxi Cosi Cabriofix & EasyBase2 (Belt)



Britax Römer King II LS (Belt)



Britax Römer KidFix XP (Belt)


Comments

In the frontal offset and side barrier tests, protection of the 6 and 10 year dummies was good or adequate for all critical body areas. The front passenger airbag can be disabled to allow a rearward-facing child restraint to be used in that seating position. Clear information is provided to the driver regarding the status of the airbag and the system was rewarded. All of the restraint types for which the I-PACE is designed could be properly installed and accommodated in the car.

CHILD OCCUPANT

Total 40.0 Pts / 81%

	Seat Position			
	Front	2nd row		
	PASSENGER	LEFT	CENTER	RIGHT
Maxi Cosi 2way Pearl & 2wayFix (rearward) (iSize)	—	●	—	●
Maxi Cosi 2way Pearl & 2wayFix (forward) (iSize)	—	●	—	●
BeSafe iZi Kid X2 i-Size (iSize)	—	●	—	●
Maxi Cosi Cabriofix & FamilyFix (ISOFIX)	—	●	—	●
BeSafe iZi Kid X4 ISOfix (ISOFIX)	—	●	—	●
Britax Römer Duo Plus (ISOFIX)	—	●	—	●
Britax Römer KidFix XP (ISOFIX)	—	●	—	●
Maxi Cosi Cabriofix (Belt)	●	●	●	●
Maxi Cosi Cabriofix & EasyBase2 (Belt)	●	●	●	●
Britax Römer King II LS (Belt)	●	●	●	●
Britax Römer KidFix XP (Belt)	●	●	●	●

● Easy ● Difficult ● Safety critical ✘ Not allowed — Not available

Comments


In the frontal offset and side barrier tests, protection of the 6 and 10 year dummies was good or adequate for all critical body areas. The front passenger airbag can be disabled to allow a rearward-facing child restraint to be used in that seating position. Clear information is provided to the driver regarding the status of the airbag and the system was rewarded. All of the restraint types for which the I-PACE is designed could be properly installed and accommodated in the car.

VULNERABLE ROAD USERS

Total 35.3 Pts / 73%

GOOD
 ADEQUATE
 MARGINAL
 WEAK
 POOR

VRU Impact Protection 28.0 / 36 Pts



Head Impact	16.7 Pts
Pelvis Impact	5.3 Pts
Leg Impact	6.0 Pts

Vulnerable Road Users 7.3 / 12 Pts

System Name	Emergency Braking
Type	Auto-Brake with Forward Collision Warning
Operational From	5 km/h

Comments

The I-PACE has an 'active' bonnet. Sensors in the bumper detect when a pedestrian has been struck and an airbag lifts the bonnet to provide greater clearance to hard structures underneath. Jaguar showed that the system detected a variety of pedestrian statures over a wide range of speed so the vehicle was tested with the deployed airbag. The protection provided by the bonnet to the head of a struck pedestrian predominantly ranged from marginal to good. The bumper provided good protection to pedestrians' legs at all test locations. Protection of the pelvis was also predominantly good. The AEB system is able to detect vulnerable road users such as pedestrians and cyclists. In most tests of these functionalities, the system performed well, with collisions avoided or their severity mitigated, even at night-time in the case of pedestrians.

 VULNERABLE ROAD USERS

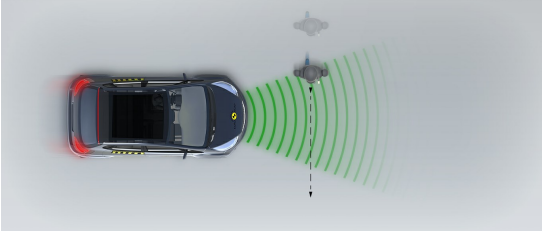
Total 35.3 Pts / 73%

AEB Pedestrian

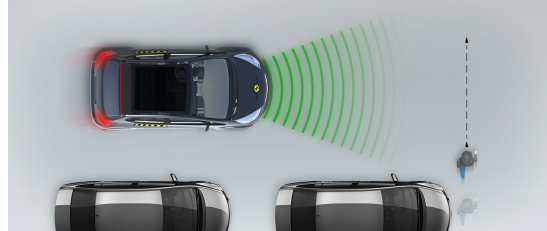


Day time

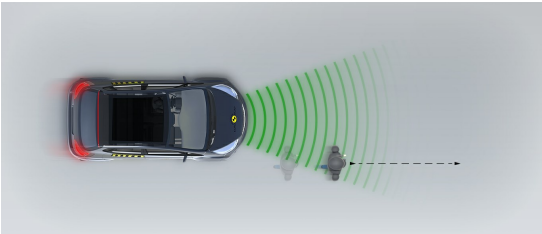
Adult crossing the road



Child running from behind parked vehicles

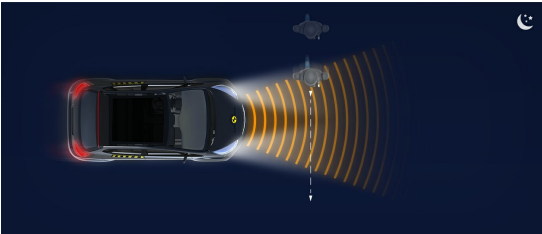


Adult along the roadside

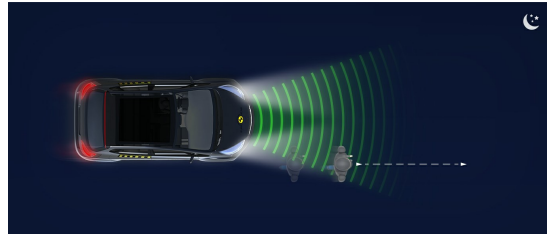


Night time

Adult crossing the road



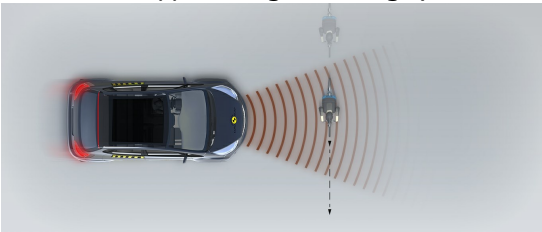
Adult along the roadside



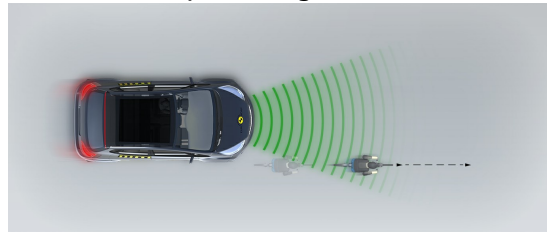
AEB Cyclist



Approaching a crossing cyclist



Cyclist along the roadside



SAFETY ASSIST

Total 10.6 Pts / 81%

GOOD
 ADEQUATE
 MARGINAL
 WEAK
 POOR

Speed Assistance

2.5 / 3 Pts

System Name	Adaptive Speed Limiter
Speed Limit Information Function	Camera & Map
Speed Limitation Function	System advised (accurate to 5km/h)

Seatbelt Reminder

2.5 / 3 Pts

Applies To	Not available		
	Driver Seat	Front Passenger(s)	Rear Passenger(s)
Warning			
Visual	●	●	●
Audible	●	●	●
Occupant Detection	—	●	●

● Pass
 ● Fail
 — Not available

Lane Support

3.0 / 4 Pts

System Name	Lane Keep Assist
Type	LKA and ELK
Operational From	50 km/h


PERFORMANCE

Emergency Lane Keeping	 ADEQUATE
Lane Keep Assist	 GOOD
Human Machine Interface	 ADEQUATE

 SAFETY ASSIST

Total 10.6 Pts / 81%

AEB Inter-Urban

 2.6 / 3 Pts

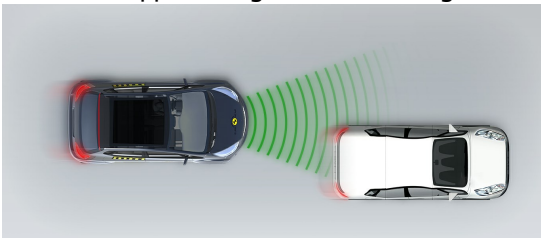
System Name	Emergency Braking
Type	Autonomous Emergency Braking and Forward Collision Warning
Operational From	5 km/h
Additional Information	Supplementary warning

Comments

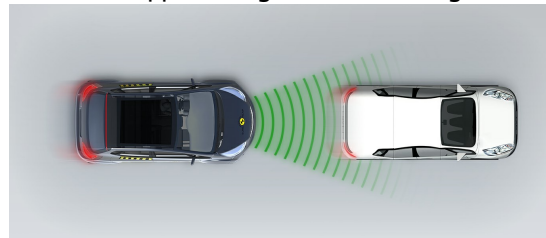
The I-PACE has a seatbelt reminder system for the front and rear seats. The AEB system performed well or adequately in various tests of its functionality at highway speeds. A standard-fit lane-keep assist system helps to keep the car from drifting out of lane and can also intervene in more severe emergency situations. A driver-set speed limiter helps the driver maintain control of the vehicle speed.

■ **Autobrake function only**

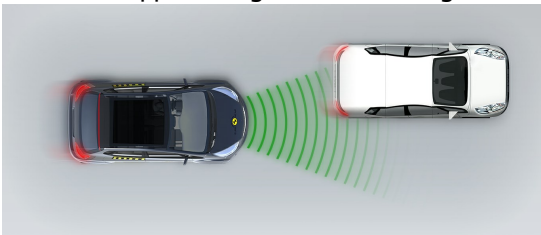
Approaching a slower moving car



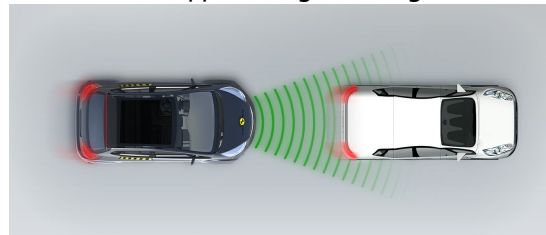
Approaching a slower moving car



Approaching a slower moving car



Approaching a braking car

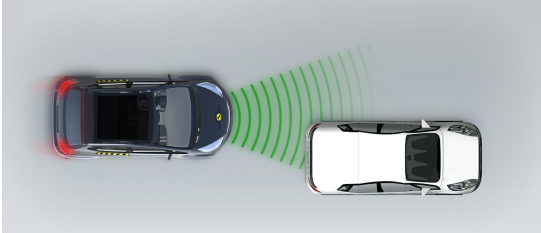


 SAFETY ASSIST

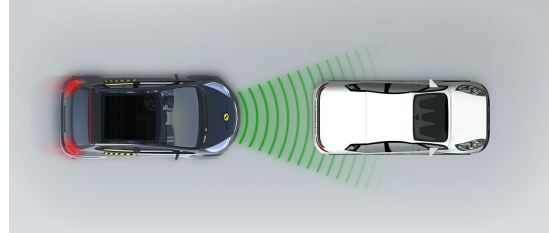
Total 10.6 Pts / 81%

■ Driver reacts to warning

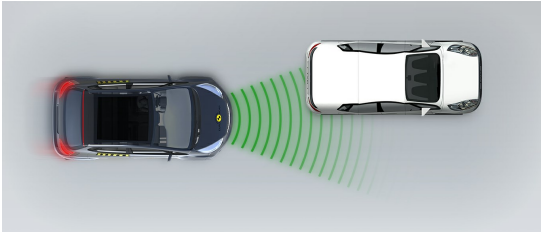
Approaching a stationary car



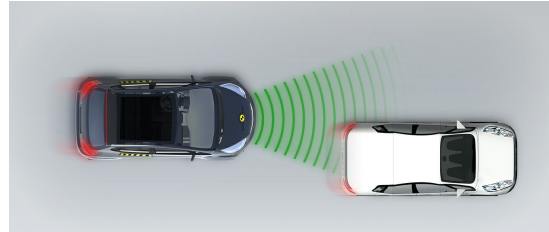
Approaching a stationary car



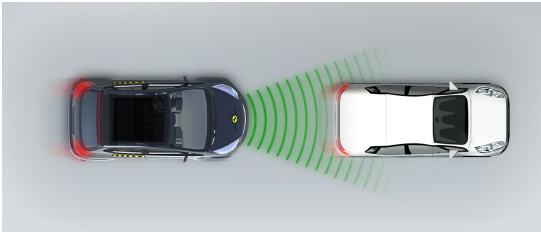
Approaching a stationary car



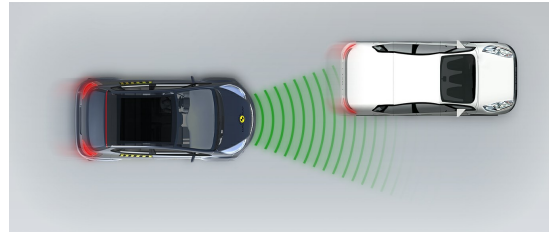
Approaching a slower moving car



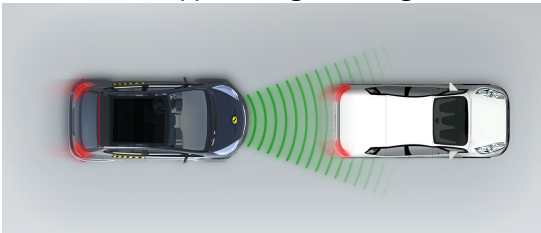
Approaching a slower moving car



Approaching a slower moving car



Approaching a braking car



RATING VALIDITY

Variants of Model Range

Body Type	Model Name/Code	Drivetrain	Rating Applies	
			LHD	RHD
5 door hatchback	I-PACE SE EV400*	4 x 4	✓	✓

* Tested variant

Annual Reviews and Facelifts

Date	Event	Outcome
December 2018	Rating Published	2018 ★ ★ ★ ★ ★ ✓
December 2019	Annual Review	2018 ★ ★ ★ ★ ★ ✓
December 2020	Annual Review	2018 ★ ★ ★ ★ ★ ✓
December 2021	Annual Review	2018 ★ ★ ★ ★ ★ ✓