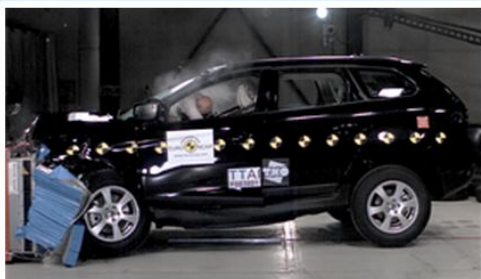


# TEST RESULTS

## Volvo XC60



RATING	SCORE	Front: 15.5 Side: 16	Seatbelt reminder: 3 Pole: 2
<b>ADULT OCCUPANT</b> ★★★★★	<b>37</b>		
<b>CHILD OCCUPANT</b> ★★★★★	<b>39</b>		
<b>PEDESTRIAN</b> ★★☆☆	<b>17</b>		

### Adult occupant protection



Frontal impact driver



Frontal impact passenger



Side impact driver

Green	GOOD
Yellow	ADEQUATE
Orange	MARGINAL
Brown	WEAK
Red	POOR

### Child restraints

**18 month old Child** Volvo Childseat, rearward facing

**3 year old Child** Volvo Childseat, rearward facing

### Pedestrian protection



Pedestrian protection

Green	GOOD
Yellow	ADEQUATE
Red	MARGINAL

### Safety equipment

Front seatbelt pretensioners	<input checked="" type="checkbox"/>
Front seatbelt load limiters	<input checked="" type="checkbox"/>
Driver frontal airbag	<input checked="" type="checkbox"/>
Front passenger frontal airbag	<input checked="" type="checkbox"/>
Side body airbags	<input checked="" type="checkbox"/>
Side head airbags	<input checked="" type="checkbox"/>
Driver knee airbag	<input type="checkbox"/>

### Car details

<b>Tested model</b>	Volvo XC60 diesel 'Momentum', LHD
<b>Body type</b>	5 door crossover
<b>Year of publication</b>	2008
<b>Kerb weight</b>	1850kg
<b>VIN from which rating applies</b>	Applies to all applies XC60's

### Comments

#### Front impact

The passenger compartment remained stable in the impact and the windscreen pillar was displaced rearward only 3mm after the test. The steering column is designed to collapse horizontally away from the driver and this created additional space for protection. Degressive adaptive load-limiters tailor the restraint of the occupants according to the position of the seat and the severity of the accident. Dummy readings indicated good protection of the knees and femurs and Volvo were able to demonstrate that similar levels of protection would be provided to occupants of different sizes and to those sat in different positions.

#### Side impact

The XC60 scored maximum points for the protection provided in the side impact and pole tests.

#### Child occupant

Both dummies were seated in rearward-facing child restraints. Based on dummy readings in the dynamic tests, the XC60 scored maximum points for its protection of the 3 year child and lost only a fraction of a point for the 1½ year infant. The passenger airbag can be disabled to allow a rearward facing child seat to be used in that position. However, information provided to the driver regarding the status of the airbag is not sufficiently clear. The label warning of the dangers of using a rearward facing seat in that position without first disabling the airbag was not clear and were not permanently attached. The presence of ISOFIX anchorages in the rear outboard seats was not clearly marked.

#### Pedestrian

The bumper scored maximum points for the protection offered to pedestrians' legs. However, additional tests showed that some areas beyond the central zone provided poor protection. In the area likely to be hit by a child's head, protection provided by the bonnet provided was predominantly fair. However, protection was mostly poor for an adult's head and the front edge of the bonnet scored no points.