



Ford Focus  
Standard Safety Equipment

2019



Adult Occupant



96%

Child Occupant



87%

Vulnerable Road Users



72%

Safety Assist



75%

SPECIFICATION

Tested Model	Ford Focus 1.0 'Trend', LHD
Body Type	- 5 door hatchback
Year Of Publication	2019
Kerb Weight	1312kg
VIN From Which Rating Applies	- WF0MXXGCHMKT13569
Class	Small Family Car

✗ Rating Expired

## SAFETY EQUIPMENT

	Driver	Passenger	Rear
FRONTAL CRASH PROTECTION			
Frontal airbag	●	●	✗
Belt pretensioner	●	●	●
Belt loadlimiter	●	●	●
Knee airbag	✗	✗	✗
SIDE CRASH PROTECTION			
Side head airbag	●	●	●
Side chest airbag	●	●	✗
Side pelvis airbag	●	●	✗

	Driver	Passenger	Rear
CHILD PROTECTION			
Isofix/i-Size	—	✗	●
Integrated CRS	—	✗	✗
Airbag cut-off switch	—	●	—
SAFETY ASSIST			
Seat Belt Reminder	●	●	●

## SAFETY EQUIPMENT (NEXT)

	Driver	Passenger	Rear
CHILD PROTECTION			
Isofix/i-Size	—	×	●
Integrated CRS	—	×	×
Airbag cut-off switch	—	●	—
SAFETY ASSIST			
Seat Belt Reminder	●	●	●

OTHER SYSTEMS	
Active Bonnet (Hood)	×
AEB Pedestrian	●
AEB City	●
AEB Cyclist	●
AEB Inter-Urban	●
Speed Assistance System	●
Lane Assist System	●

Note: Other equipment may be available on the vehicle but was not considered in the test year.

- Fitted to the vehicle as standard    ○ Fitted to the vehicle as part of the safety pack  
 ○ Not fitted to the test vehicle but available as option or as part of the safety pack    × Not available    — Not applicable

 ADULT OCCUPANT

Total 36.6 Pts / 96%

 GOOD     ADEQUATE     MARGINAL     WEAK     POOR

Frontal Offset Deformable Barrier

7.7 / 8 Pts



Passenger



Driver

Frontal Full Width

7.5 / 8 Pts



Rear Passenger



Driver

Whiplash Rear Impact

1.6 / 2 Pts



Front seat



Rear seat

Lateral Impact

15.9 / 16 Pts



Car



Pole

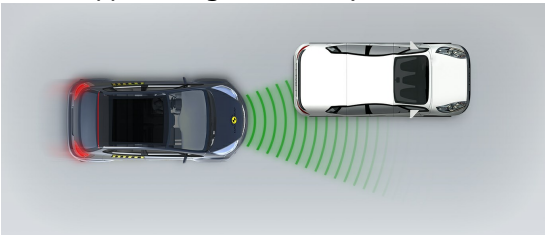
 ADULT OCCUPANT

Total 36.6 Pts / 96%

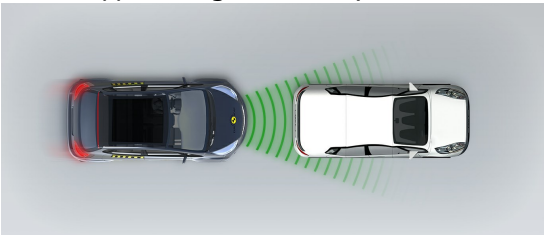
GOOD ADEQUATE MARGINAL WEAK POOR

AEB City 4.0 / 4 Pts

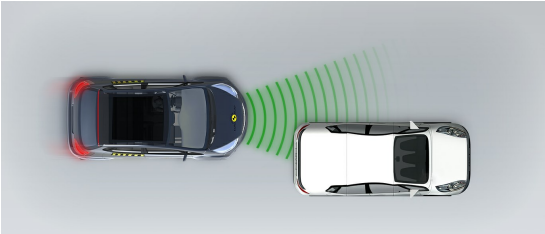
Approaching a stationary car: Left Offset



Approaching a stationary car: No Offset



Approaching a stationary car: Right Offset



 ADULT OCCUPANT

Total 36.6 Pts / 96%

Comments

The passenger compartment of the Focus remained stable in the frontal offset test. Dummy readings indicated good protection of the knees and femurs of both driver and passenger dummy. Ford showed that a similar level of protection would be provided to occupants of different sizes and to those sitting in different positions. In the full-width rigid barrier test, protection of the chest of the driver and rear passenger occupants was rated as adequate, with good protection of all other critical body areas. In the side barrier test, protection of all critical body areas was good and the Focus scored maximum points. In the more severe side pole impact, protection was good for everything except the chest, which was adequately protected. Ford has improved the design of the front seats and head restraints of the Focus since it was tested in 2018. Tests now demonstrated good protection against whiplash injuries in the event of a rear-end collision. A geometric assessment of the rear seats indicated good whiplash protection. The autonomous emergency braking system performed well in tests of its functionality at the low speeds typical of city driving.



## CHILD OCCUPANT

Total 43.0 Pts / 87%

■ GOOD
 ■ ADEQUATE
 ■ MARGINAL
 ■ WEAK
 ■ POOR

Crash Test Performance based on 6 &amp; 10 year old children

24.0 / 24 Pts

## Frontal Impact

16 Pts



## Lateral Impact

8 Pts

Restraint for 6 year old child: *Römer Kidfix*Restraint for 10 year old child: *Booster Cushion*

## Safety Features

7.0 / 13 Pts

	Front Passenger	2nd row outboard	2nd row center
Isofix	✗	●	✗
i-Size	✗	●	✗
Integrated CRS	✗	✗	✗

● Fitted to test car as standard
 ○ Not on test car but available as option
 ✗ Not available

## CRS Installation Check

12.0 / 12 Pts

● Install without problem    ● Install with care    ● Safety critical problem    ✗ Installation not allowed

## ■ i-Size CRS

 Maxi Cosi 2way Pearl & 2wayFix  
 (rearward) (iSize)

 Maxi Cosi 2way Pearl & 2wayFix  
 (forward) (iSize)


BeSafe iZi Kid X2 i-Size (iSize)



BeSafe iZi Flex FIT i-Size (iSize)



## ■ ISOFIX CRS

Maxi Cosi Cabriofix &amp; FamilyFix (ISOFIX)



BeSafe iZi Kid X4 ISOfix (ISOFIX)



Britax Römer Duo Plus (ISOFIX)



Britax Römer KidFix XP (ISOFIX)





## CHILD OCCUPANT

Total 43.0 Pts / 87%

## ■ Universal Belted CRS

Maxi Cosi Cabriofix (Belt)



Maxi Cosi Cabriofix &amp; EasyBase2 (Belt)



Britax Römer King II LS (Belt)



Britax Römer KidFix XP (Belt)



## Comments

Good protection was provided to both the 6 and the 10 year dummies in the frontal offset and side barrier tests, the Focus scoring maximum points for this part of the assessment. The front passenger airbag can be disabled to allow a rearward-facing child restraint to be used in that seating position. Clear information is provided to the driver regarding the status of the airbag and the system was rewarded. All of the restraint types for which the car is designed could be properly installed and accommodated in the car.



## CHILD OCCUPANT

Total 43.0 Pts / 87%

	Seat Position			
	Front	2nd row		
	PASSENGER	LEFT	CENTER	RIGHT
Maxi Cosi 2way Pearl & 2wayFix (rearward) (iSize)	—	●	—	●
Maxi Cosi 2way Pearl & 2wayFix (forward) (iSize)	—	●	—	●
BeSafe iZi Kid X2 i-Size (iSize)	—	●	—	●
BeSafe iZi Flex FIT i-Size (iSize)	—	●	—	●
Maxi Cosi Cabriofix & FamilyFix (ISOFIX)	—	●	—	●
BeSafe iZi Kid X4 ISOfix (ISOFIX)	—	●	—	●
Britax Römer Duo Plus (ISOFIX)	—	●	—	●
Britax Römer KidFix XP (ISOFIX)	—	●	—	●
Maxi Cosi Cabriofix (Belt)	●	●	●	●
Maxi Cosi Cabriofix & EasyBase2 (Belt)	●	●	●	●
Britax Römer King II LS (Belt)	●	●	●	●
Britax Römer KidFix XP (Belt)	●	●	●	●

● Easy    ● Difficult    ● Safety critical    ✖ Not allowed    — Not available

## Comments

Good protection was provided to both the 6 and the 10 year dummies in the frontal offset and side barrier tests, the Focus scoring maximum points for this part of the assessment. The front passenger airbag can be disabled to allow a rearward-facing child restraint to be used in that seating position. Clear information is provided to the driver regarding the status of the airbag and the system was rewarded. All of the restraint types for which the car is designed could be properly installed and accommodated in the car.

 VULNERABLE ROAD USERS

Total 34.8 Pts / 72%

GOOD


ADEQUATE

MARGINAL

WEAK

POOR

VRU Impact Protection27.7 / 36 Pts



Head Impact15.9 Pts

Pelvis Impact5.8 Pts

Leg Impact6.0 Pts

Vulnerable Road Users7.1 / 12 Pts	
System Name	Pre-Collision Assist
Type	Auto-Brake with Forward Collision Warning
Operational From	5 km/h

Comments

The bonnet provided predominantly good or adequate protection to the head of a struck pedestrian, with some poor results only on the stiff windscreen pillars. Protection of the pelvis was also good or adequate, with the bumper scoring maximum points for its protection of pedestrians' legs. The autonomous emergency braking system performed well or adequately in all tests of its pedestrian and cyclist detection, in daylight and low-light conditions.

Version 0605126060126

Euro NCAP © Ford Focus July 2018 11/17





## VULNERABLE ROAD USERS

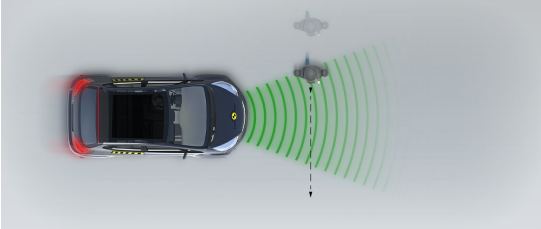
Total 34.8 Pts / 72%

## AEB Pedestrian

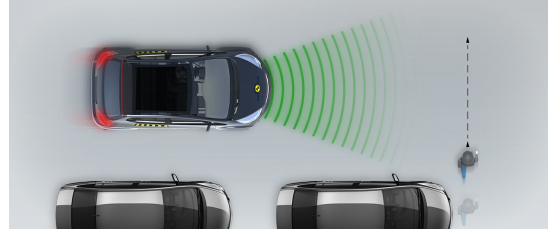


## ■ Day time

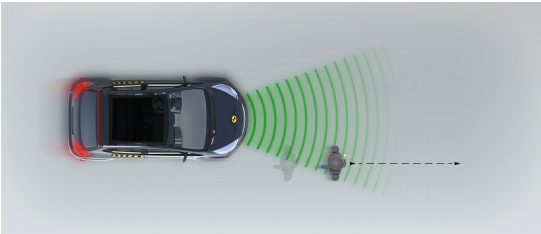
Adult crossing the road



Child running from behind parked vehicles

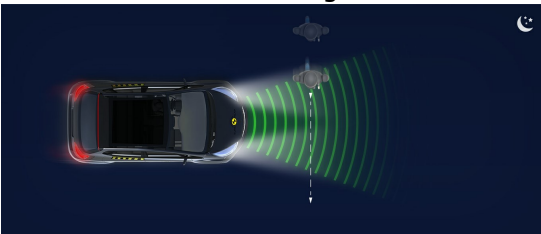


Adult along the roadside

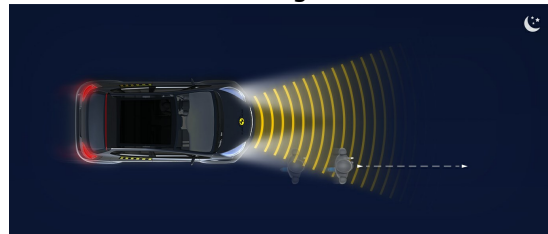


## ■ Night time

Adult crossing the road



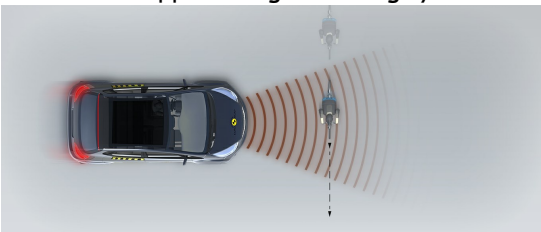
Adult along the roadside



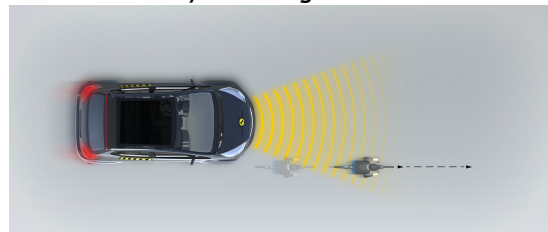
## AEB Cyclist



Approaching a crossing cyclist



Cyclist along the roadside





## SAFETY ASSIST

Total 9.9 Pts / 75%

 GOOD


 ADEQUATE

 MARGINAL

 WEAK


 POOR










## Speed Assistance




 2.5 / 3 Pts

System Name	Intelligent Speed Limiter
Speed Limit Information Function	Camera based
Speed Limitation Function	System advised (accurate to 5km/h)


## Seatbelt Reminder

 2.5 / 3 Pts

Applies To	All Seats		
Warning	Driver Seat	Front Passenger(s)	Rear Passenger(s)
Visual			
Audible			
Occupant Detection			



 Pass
  Fail
  Not available

## Lane Support

 2.3 / 4 Pts

System Name	Lane Keeping Aid, Lane Keeping Alert
Type	LKA (including LDW)
Operational From	60 km/h

## PERFORMANCE

Lane Keep Assist	 GOOD
Human Machine Interface	 ADEQUATE

 SAFETY ASSIST

Total 9.9 Pts / 75%

AEB Inter-Urban  2.6 / 3 Pts

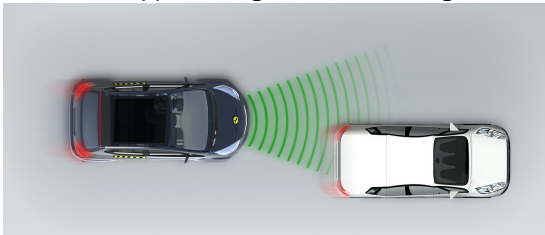
System Name	Pre Collision Assist
Type	Autonomous Emergency Braking and Forward Collision Warning
Operational From	5 km/h
Additional Information	Supplementary warning

Comments

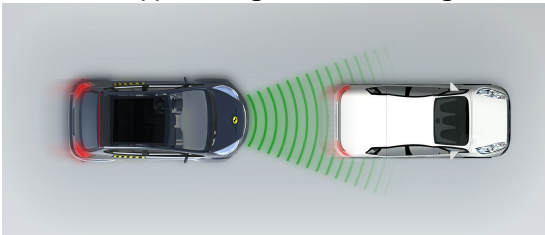
The Focus has a seatbelt reminder system as standard equipment. A speed assistance system uses a camera and a digital map to recognise the local speed limit and allows the driver to automatically set the speed limiter accordingly. In tests of its functionality at highway speeds, the autonomous emergency braking system performed well in all scenarios. When the lane assistance system senses that the car is drifting out of lane, it warns the driver and applies a gentle steering correction to correct the path of the vehicle.

■ Autobrake function only

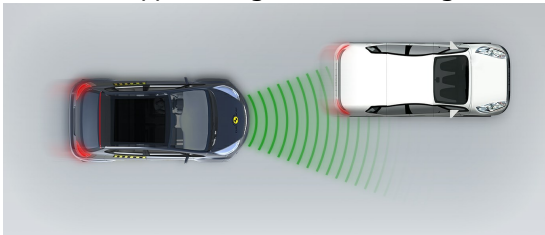
Approaching a slower moving car



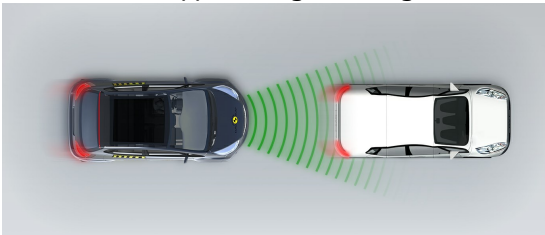
Approaching a slower moving car



Approaching a slower moving car



Approaching a braking car



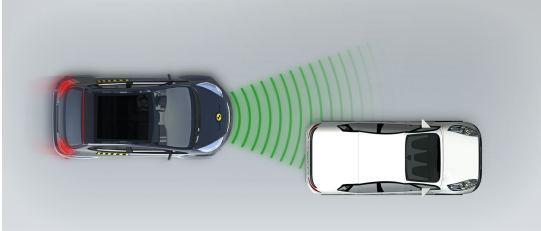


## SAFETY ASSIST

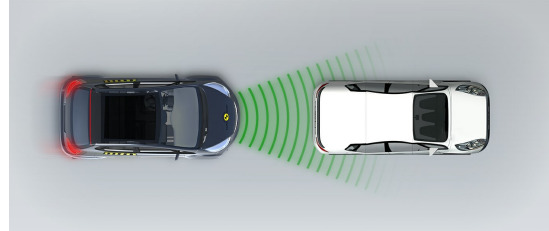
Total 9.9 Pts / 75%

## ■ Driver reacts to warning

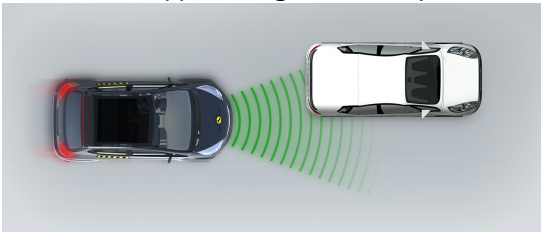
Approaching a stationary car



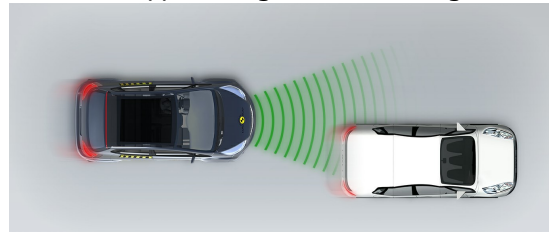
Approaching a stationary car



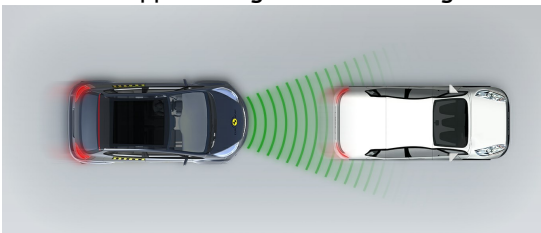
Approaching a stationary car



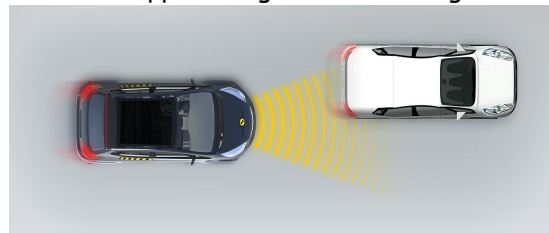
Approaching a slower moving car



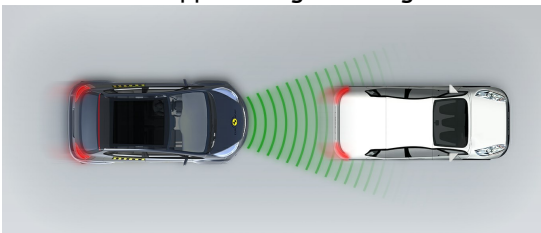
Approaching a slower moving car



Approaching a slower moving car



Approaching a braking car



## RATING VALIDITY

### Variants of Model Range

Body Type	Engine & Transmission	Drivetrain	Rating Applies	
			LHD	RHD
4 door saloon	1.0 petrol	4 x 2	✓	✓
4 door saloon	1.5 petrol	4 x 2	✓	✓
4 door saloon	1.5 diesel	4 x 2	✓	✓
5 door hatchback	1.0 petrol	4 x 2	✓	✓
5 door hatchback	1.5 petrol	4 x 2	✓	✓
5 door hatchback	1.5 diesel	4 x 2	✓	✓
5 door hatchback	2.0 diesel	4 x 2	✓	✓
5 door estate	1.0 petrol	4 x 2	✓	✓
5 door estate	1.5 petrol	4 x 2	✓	✓
5 door estate	1.5 diesel	4 x 2	✓	✓
5 door estate	2.0 diesel	4 x 2	✓	✓

\* Tested variant

### Annual Reviews and Facelifts

Date	Event	Outcome	
September 2019	Rating Published	2019 ★ ★ ★ ★ ★	✓
September 2020	Annual Review	2019 ★ ★ ★ ★ ★	✓
September 2021	Annual Review	2019 ★ ★ ★ ★ ★	✓
October 2021	Facelift Review	2019 ★ ★ ★ ★ ★	✓
September 2022	Annual Review	2019 ★ ★ ★ ★ ★	✓

Euro NCAP © Ford Focus July 2018 17/17